

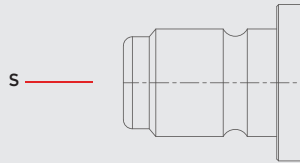
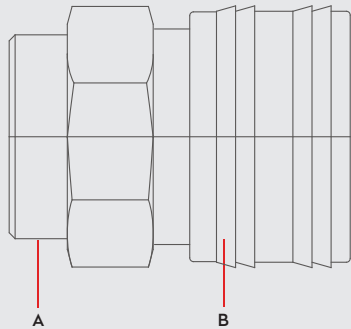


PNEUMATIC COUPLINGS
PNEUMATISCHE KUPPLUNGEN

SERIE 121 DN12



Materials



Material Code

A = Stainless Steel AISI316

B = Stainless Steel AISI316

S = Stainless Steel AISI316

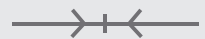


Stainless Steel
0 - 100 bar



-20° to + 200°C (FPM)
-4° to + 392°F

Shut Off
Type



OV 262 - 01785
OV 262 - 01510

FULL FLOW

DN

12 mm

2 STAGE

121 SP01



Options

EPDM

AISI303

Stainless Steel

Brass

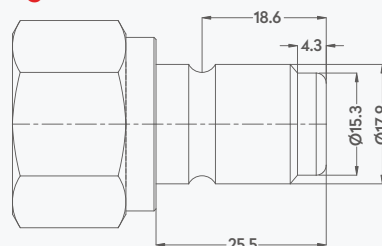
Ms 58

NICKEL

2 STAGE

121 SP01

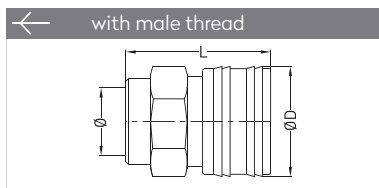
Plug Profile Serie 121



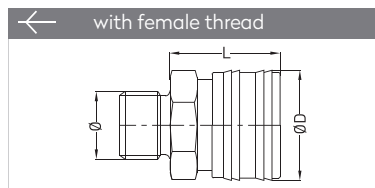
Compatible with



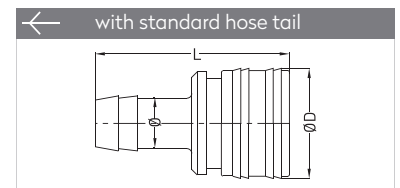
QUICK COUPLINGS SCHNELLKUPPLUNGEN



Connection	Part No.	SW	L	ØD
BSP T 3/8"	121 DGF 17	27	45	34
BSP T 1/2"	121 DGF 21	27	45	34

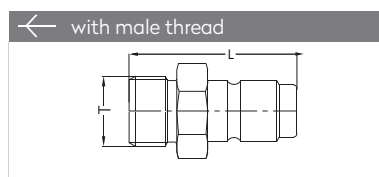


Connection	Part No.	SW	L	L1	ØD
BSP 3/8"	121 EGF 17	27	46	33	34
BSP 1/2"	121 EGF 21	27	49	33	34
BSP 3/4"	121 EGF 26	32	52	33	34

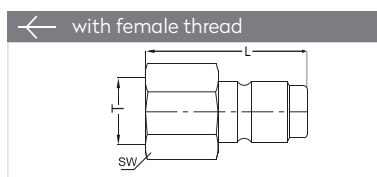


Connection	Part No.	L	ØD
Ø 13	121 HGF 13	53	34
Ø 16	121 HGF 16	53	34
Ø 19	121 HGF 19	62	34

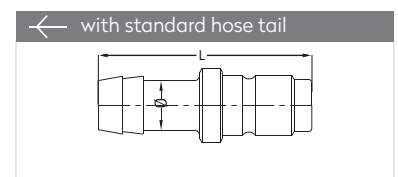
PLUGS STECKNIPPEL



Connection	Part No.	SW	L
BSP 1/4"	121 EU 13	22	45
BSP 3/8"	121 EU 17	22	46
BSP 1/2"	121 EU 21	27	49
BSP 3/4"	121 EU 26	32	53



Connection	Part No.	SW	L
BSP 1/4"	121 DU 13	27	42
BSP 3/8"	121 DU 17	27	42
BSP 1/2"	121 DU 21	27	47
BSP 3/4"	121 DU 26	32	50



Connection	Part No.	SW	L
Ø 13	121 HU 13	62,5	21
Ø 16	121 HU 16	62,5	21
Ø 19	121 HU 19	62,5	21