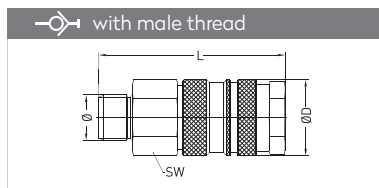
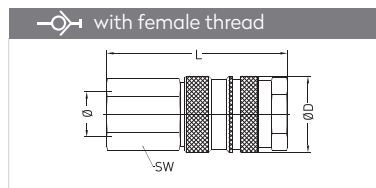




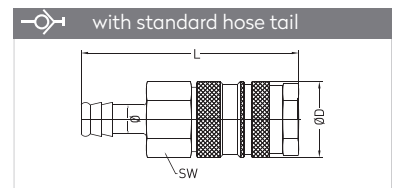
QUICK COUPLINGS SCHNELLKUPPLUNGEN



Connection	Part No.	SW	L	ØD
BSP 1/8"	092 EGD 10	19	57,8	23
BSP 1/4"	092 EGD 13	19	59,8	23
BSP 3/8"	092 EGD 17	19	59,8	23

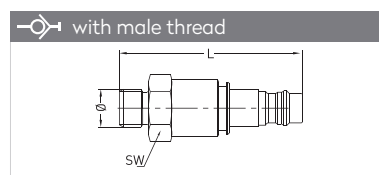


Connection	Part No.	SW	L	ØD
BSP 1/4"	092 DGD 13	19	57,8	23
BSP 3/8"	092 DGD 17	19	57,8	23
BSP 1/2"	092 DGD 21	24	59,8	23

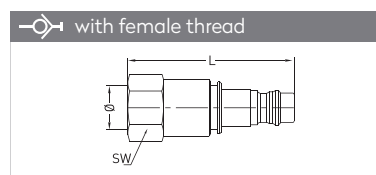


Connection	Part No.	SW	L	ØD
6 mm - 1/4"	092 HGD 06	19	73,8	23
8 mm - 5/16"	092 HGD 08	19	73,8	23
10 mm - 3/8"	092 HGD 10	19	73,8	23
13 mm - 1/2"	092 HGD 13	19	73,8	23

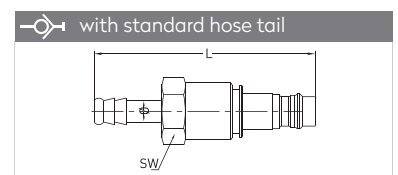
PLUGS STECKNIPPEL



Connection	Part No.	SW	L	ØD
BSP 1/8"	092 EUD 10	20	60,9	23
BSP 1/4"	092 EUD 13	20	62,9	23
BSP 3/8"	092 EUD 17	20	63,9	23



Connection	Part No.	SW	L	ØD
BSP 1/8"	092 DUD 10	20	56,9	23
BSP 1/4"	092 DUD 13	20	56,9	23
BSP 3/8"	092 DUD 17	20	59,9	23



Connection	Part No.	SW	L	ØD
6 mm - 1/4"	092 HUD 06	20	73,9	23
8 mm - 5/16"	092 HUD 08	20	73,9	23
10 mm - 3/8"	092 HUD 10	20	73,9	23
13 mm - 1/2"	092 HUD 13	20	73,9	23



PNEUMATIC COUPLINGS
PNEUMATISCHE KUPPLUNGEN



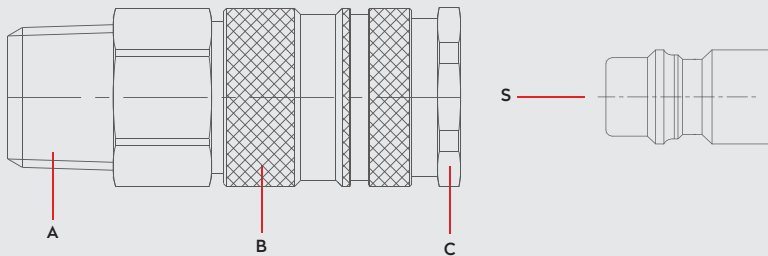
SERIE 095E

SAFETY LOCK

DN 7.4



Materials



Material Code

- A = Brass Nickel Plated
- B = Brass Nickel Plated
- C = Brass Nickel Plated
- S = Brass Nickel Plated



0 - 35 bar
(0-508 PSI)



-20° to + 100°C (NBR)
-4° to + 212°F

Shut Off Type



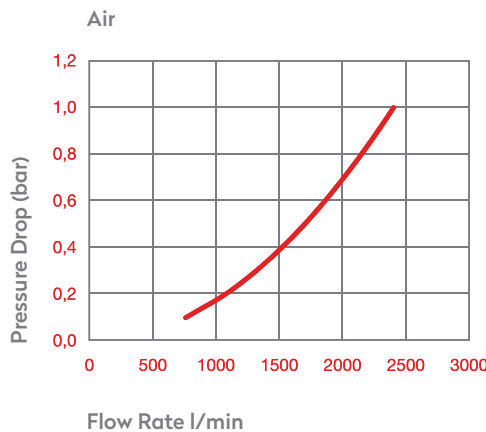
025GC00M
OM 250 - 00500
OM 100 - 01000

FLOW

1700 lt/min

DN

7.4 mm



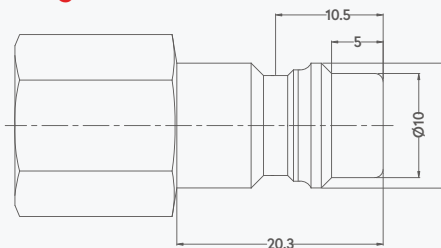
Options

EPDM

AISI303
Stainless Steel

AISI316
Stainless Steel

Plug Profile Serie 095E



Compatible with

TST SWING COUPLING M
PARKER - RECTUS 95KS
CEJN 344