

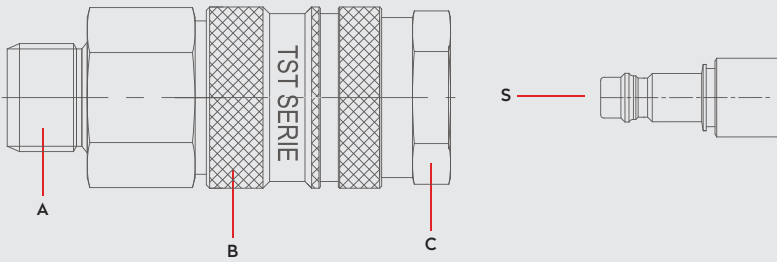


PNEUMATIC COUPLINGS
PNEUMATISCHE KUPPLUNGEN



SERIE 046D

Materials



Material Code

- A = Brass Nickel Plated
- B = Brass Nickel Plated
- C = Brass Nickel Plated
- S = Brass Nickel Plated



0 - 35 bar
(0-508 PSI)



-20° to + 100°C (NBR)
-4° to + 212°F

Shut Off
Type



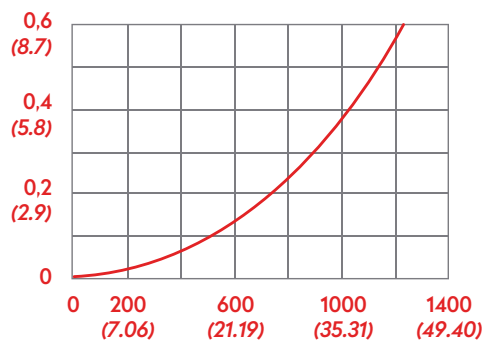
OM 300 - 00750
OM 100 - 01000
OM 157 - 00700

SAFETY LOCK

DN

6 mm

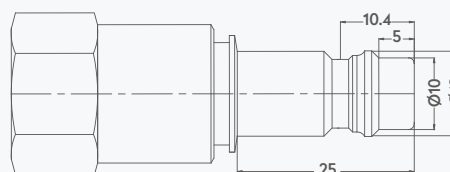
Air Flow
Pressure drop bar (PSI)



Flow CFM (l/min)

Options

Plug Profile Serie 046D



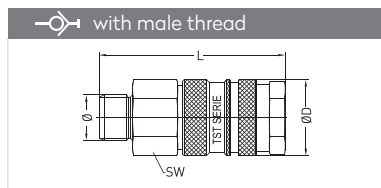
Compatible with

CEJN

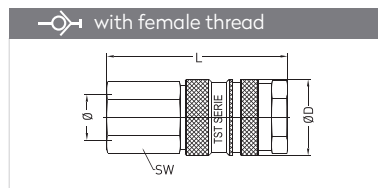
345



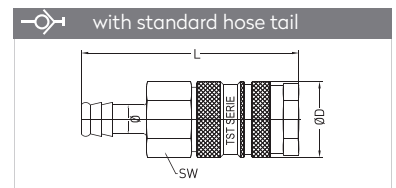
QUICK COUPLINGS SCHNELLKUPPLUNGEN



Connection	Part No.	SW	L	ØD
BSP 1/8"	046 EGD 10	19	57,3	23
BSP 1/4"	046 EGD 13	19	59,3	23
BSP 3/8"	046 EGD 17	19	59,3	23

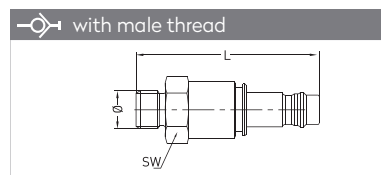


Connection	Part No.	SW	L	ØD
BSP 1/4"	046 DGD 13	19	54,3	23
BSP 3/8"	046 DGD 17	19	57,3	23
BSP 1/2"	046 DGD 21	24	59,3	23

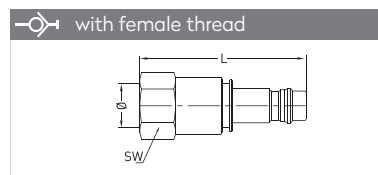


Connection	Part No.	SW	L	ØD
6 mm - 1/4"	046 HGD 06	19	73,3	23
8 mm - 5/16"	046 HGD 08	19	73,3	23
10 mm - 3/8"	046 HGD 10	19	73,3	23
13 mm - 1/2"	046 HGD 13	19	73,3	23

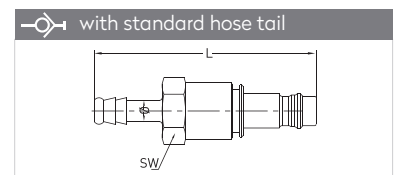
PLUGS STECKNIPPEL



Connection	Part No.	SW	L
BSP 1/8"	046 EUD 10	20	60,9
BSP 1/4"	046 EUD 13	20	62,9
BSP 3/8"	046 EUD 17	20	63,9



Connection	Part No.	SW	L
BSP 1/4"	046 DUD 10	20	56,9
BSP 3/8"	046 DUD 13	20	56,9
BSP 1/2"	046 DUD 17	20	59,9



Connection	Part No.	SW	L
6 mm - 1/4"	046 HUD 06	20	73,9
8 mm - 5/16"	046 HUD 08	20	73,9
10 mm - 3/8"	046 HUD 10	20	73,9
13 mm - 1/2"	046 HUD 13	20	73,9