



PNEUMATIC COUPLINGS
PNEUMATISCHE KUPPLUNGEN



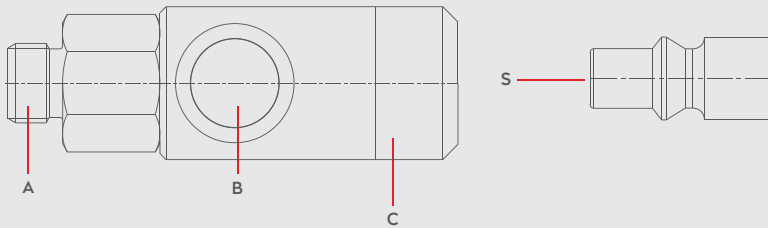
SERIE **022S.06**



DN **5.5**

SERIE
022S.06

Materials



Material Code

- A = Brass Nickel Plated
- B = Steel Zinc Plated
- C = Aluminium
- S = Steel Zinc Plated

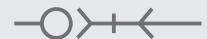


0 - 12 bar
(0-174PSI)



-20° to + 100°C (NBR)
-4° to + 212°F

Shut Off Type



- OM 190 - 00580
- OM 200 - 00800
- OM 178 - 00925

2 - STAGE
ISO 4414

DN

5.5 mm

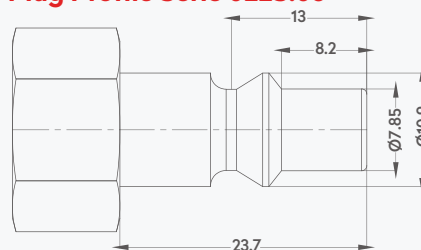
Options

SWING
A1 Serie

SWIVEL NEW

AISI303 NEW
Stainless Steel

Plug Profile Serie 022S.06



Compatible with

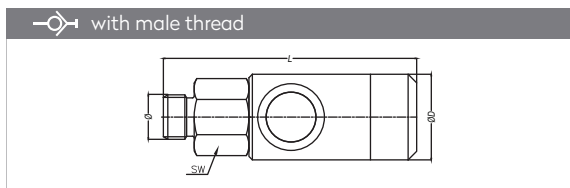
- TST 014, 022
- PARKER - RECTUS 14, 22
- CEJN 300
- ORION 44510
- JWL 522, 532



ISO 4414
ARO 210

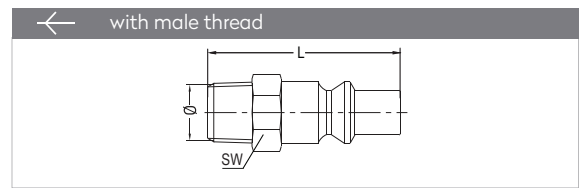
SERIE 022S.06

QUICK COUPLINGS SCHNELLKUPPLUNGEN

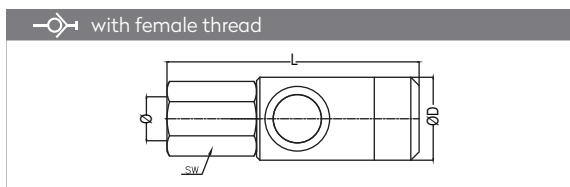


Connection	Part No.	SW	L	ØD
BSP 1/4"	022S.06 EG 13	20	72	26
BSP 3/8"	022S.06 EG 17	20	71	26
BSP 1/2"	022S.06 EG 21	25	73	26

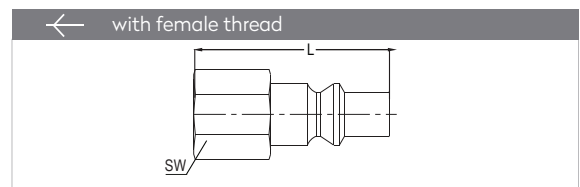
PLUGS STECKNIPPEL



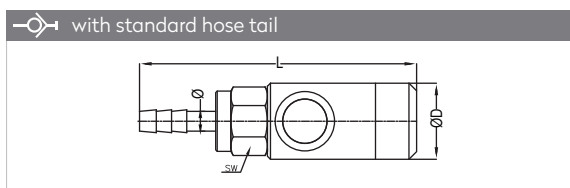
Connection	Part No.	SW	L
BSPT 1/8"	022 RU 10	12	40
BSPT 1/4"	022 RU 13	14	43
BSPT 3/8"	022 RU 17	17	43
BSPT 1/2"	022 RU 21	12	48



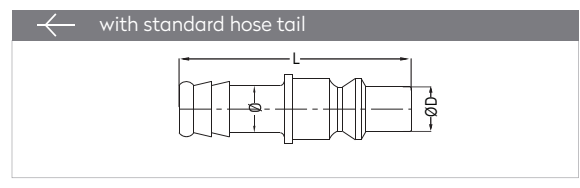
Connection	Part No.	SW	L	ØD
BSP 1/4"	022S.06 DG 13	20	70,5	26
BSP 3/8"	022S.06 DG 17	20	75	26
BSP 1/2"	022S.06 DG 21	25	77	26



Connection	Part No.	SW	L
BSP 1/8"	022 DU 10	14	34
BSP 1/4"	022 DU 13	17	37
BSP 3/8"	022 DU 17	19	37
BSP 1/2"	022 DU 21	24	41



Connection	Part No.	SW	L	ØD
Ø 6 - 1/4"	022S.06 HGS 06	20	86,2	26
Ø 8 - 5/16"	022S.06 HGS 08	20	86,2	26
Ø 10 - 3/8"	022S.06 HGS 10	20	86,2	26



Connection	Part No.	L	ØD
6 mm - 1/4"	022 HU 06	48	12
8 mm - 5/16"	022 HU 08	48	12
10 mm - 3/8"	022 HU 10	48	12
13 mm - 1/2"	022 HU 13	48	15