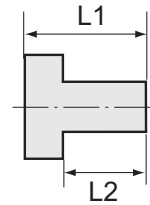




251.02-ES

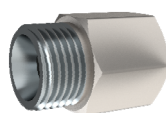


Reduziernippel, kurze Ausführung

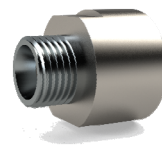
Typen Nr.	Artikel Nr.	Außengewinde	Innengewinde	L1 mm	L2 mm	SW mm
251.00-ES	111620	G 1/8	M5	11,0	7,0	14
251.00/S-ES	111621	G 1/4	M5	14,0	10,0	17
251.01-ES	111622	G 1/4	G 1/8	13,0	8,0	17
251.06-ES	111623	G 3/8	G 1/8	13,0	9,5	19
251.02-ES	111624	G 3/8	G 1/4	13,0	9,5	19
251.08-ES	111625	G 1/2	G 1/8	18,0	12,0	24
251.07-ES	111626	G 1/2	G 1/4	15,5	11,5	22
251.03-ES	111627	G 1/2	G 3/8	15,5	11,5	22
251.09-ES	111628	G 3/4	G 3/8	18,0	12,0	32
251.04-ES	111629	G 3/4	G 1/2	21,0	14,0	32
251.10-ES	111630	G 1	G 1/2	24,0	16,0	36
251.05-ES	111631	G 1	G 3/4	18,0	12,0	36



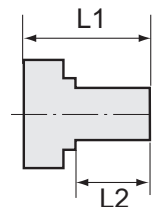
252.10-ES Abb. 1



252.16-ES Abb. 2



252.18-ES Abb. 3



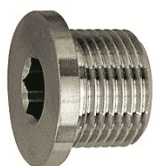
Reduziernippel, lange Ausführung

Typen Nr.	Artikel Nr.	Außen- gewinde	Innen- gewinde	L1 mm	L2 mm	SW mm	entspricht Abbildung
252.08/1-ES	111632	M5	M5	16,0	5,5	10	2
252.08/2-ES	111633	M5	G 1/8	17,0	5,0	14	2
252.11-ES	111634	G 1/8	G 1/8	23,0	8,0	14	2
252.08-ES	111635	G 1/8	G 1/4	26,0	10,0	17	2
252.12-ES	111636	G 1/4	G 1/8	28,0	10,0	17	2
252.13-ES	111637	G 1/4	G 1/4	28,0	10,0	17	2
252.09-ES	111638	G 1/4	G 3/8	26,0	10,0	19	2
252.14-ES	111639	G 3/8	G 1/4	29,0	10,0	19	2
252.15-ES	111640	G 3/8	G 3/8	29,0	10,0	19	2
252.10-ES	111641	G 3/8	G 1/2	27,0	12,0	24	1
252.16-ES	111642	G 1/2	G 3/8	34,0	12,0	24	2
252.17-ES	111643	G 1/2	G 1/2	34,0	12,0	24	2
252.18-ES	111644	G 1/2	G 3/4	38,0	13,0	32	3

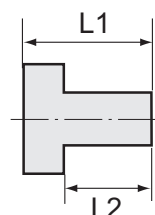
Standardverschraubungen

Edelstahl 1.4571

Typen Nr. 251.00-ES bis 252.36-ES



252.92-ES



Verschlusschrauben mit Innensechskant und Bund

Typen Nr.	Artikel Nr.	Gewinde	L1 mm	L2 mm	SW mm
252.91-ES	111645	G 1/8	11,0	8,0	5
252.92-ES	111646	G 1/4	13,0	10,0	6
252.93-ES	111647	G 3/8	15,0	12,0	8
252.94-ES	111648	G 1/2	18,0	14,0	10
252.94-2ES	111649	G 3/4	20,0	16,0	12
252.94-3ES	111650	G 1	21,0	16,0	17



252.102-ES

Verschlusschrauben mit Innensechskant, ohne Bund

Typen Nr.	Artikel Nr.	Gewinde	L1 mm	L2 mm	SW mm
252.101-ES	111651	G 1/8	8,0	-	5
252.102-ES	111652	G 1/4	10,0	-	6
252.103-ES	111653	G 3/8	12,5	-	8
252.104-ES	111654	G 1/2	14,0	-	10



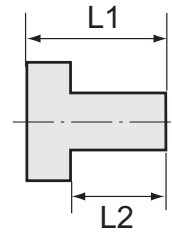
253.102-ES

Verschlusschrauben mit Innensechskant, ohne Bund

Typen Nr.	Artikel Nr.	Gewinde	L1 mm	L2 mm	SW mm
253.101-ES	111655	R 1/8	8,0	-	5
253.102-ES	111656	R 1/4	10,0	-	7
253.103-ES	111657	R 3/8	10,0	-	8
253.104-ES	111658	R 1/2	10,0	-	10
253.105-ES	111659	R 3/4	12,0	-	12
253.106-ES	111660	R 1	12,0	-	17

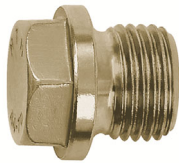


252.96-ES

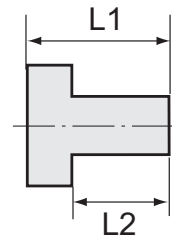


Verschlusschrauben mit Außensechskant

Typen Nr.	Artikel Nr.	Gewinde	L1 mm	L2 mm	SW mm
252.95-ES	111661	G 1/8	11,0	6,0	13
252.96-ES	111662	G 1/4	13,0	8,0	17
252.97-ES	111663	G 3/8	14,0	8,0	19
252.98-ES	111664	G 1/2	16,0	10,0	24
252.99-ES	111665	G 3/4	16,0	11,0	30
252.100-ES	111666	G 1	19,0	13,0	38

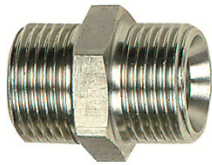


252.112-ES

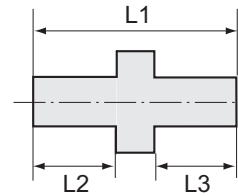


Verschlusschrauben mit Außensechskant und Bund

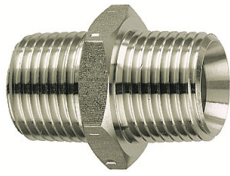
Typen Nr.	Artikel Nr.	Gewinde	L1 mm	L2 mm	SW mm
252.110-ES	111667	G 1/8	17,0	8,0	10
252.111-ES	111668	G 1/4	21,0	12,0	13
252.112-ES	111669	G 3/8	21,0	12,0	17
252.113-ES	111670	G 1/2	26,0	14,0	19
252.114-ES	111671	G 3/4	30,0	16,0	24
252.115-ES	111672	G 1	32,0	16,0	27



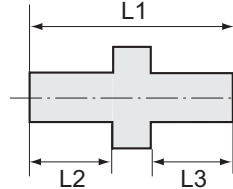
252.05-ES


Doppelgewindenippel, Außengewinde zylindrisch

Typen Nr.	Artikel Nr.	Gewinde 1	Gewinde 2	L1 mm	L2 mm	L3 mm	SW mm
252 C-ES	111673	M 5	M 5	13,0	5,0	5,0	7
252 D-ES	111674	M 5	G 1/8	17,0	5,0	7,0	14
252 E-ES	111675	M 5	G 1/4	21,0	7,0	9,0	17
252 A-ES	111676	G 1/8	G 1/8	21,0	8,0	8,0	14
252 B-ES	111677	G 1/4	G 1/8	22,0	9,0	8,0	17
252 B/1-ES	111678	G 1/8	G 3/8	25,0	9,0	11,0	19
252.01-ES	111679	G 1/4	G 1/4	23,0	9,0	9,0	17
252.02-ES	111680	G 1/4	G 3/8	24,0	9,0	10,0	19
252.02/S-ES	111681	G 1/4	G 1/2	29,0	11,0	12,0	24
252.03-ES	111682	G 3/8	G 3/8	25,0	10,0	10,0	19
252.04-ES	111683	G 3/8	G 1/2	27,0	10,0	12,0	24
252.04/S-ES	111684	G 3/8	G 3/4	36,0	12,0	16,0	32
252.05-ES	111685	G 1/2	G 1/2	29,0	12,0	12,0	24
252.06-ES	111686	G 3/4	G 1/2	33,0	12,0	12,0	32
252.06/S-ES	111687	G 1/2	G 1	40,0	16,0	16,0	36
252.07-ES	111688	G 3/4	G 3/4	33,0	12,0	12,0	32
252.07/1-ES	111689	G 3/4	G 1	40,0	16,0	16,0	36
252.07/2-ES	111690	G 1	G 1	42,5	17,0	17,0	36



252.303-ES

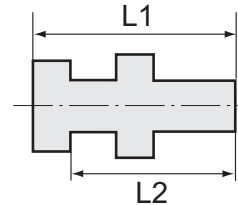


Doppelgewindenippel, Außengewinde konisch, nach ISO 7-1

Typen Nr.	Artikel Nr.	Gewinde 1	Gewinde 2	L1 mm	L2 mm	L3 mm	SW mm
252.400-ES	125690	R 1/8	R 1/8	21,0	8,0	8,0	10
252.400/2-ES	125691	R 1/8	R 1/4	24,0	8,0	11,0	14
252.400/3-ES	125692	R 1/8	R 3/8	24,0	8,0	11,0	17
252.301-ES	111694	R 1/4	R 1/4	30,0	12,0	12,0	14
252.401/2-ES	125693	R 1/4	R 3/8	27,0	11,0	11,0	17
252.401/4-ES	125694	R 1/4	R 1/2	31,0	11,0	14,0	22
252.302-ES	111697	R 3/8	R 3/8	38,0	16,0	16,0	22
252.402/2-ES	125695	R 3/8	R 1/2	31,0	11,0	14,0	22
252.402/4-ES	125696	R 3/8	R 1	35,0	11,0	18,0	36
252.303-ES	111700	R 1/2	R 1/2	38,0	16,0	16,0	27
252.403/2-ES	125697	R 1/2	R 3/4	36,0	14,0	16,0	28
252.403/3-ES	125698	R 1/2	R 1	38,0	14,0	18,0	36
252.304-ES	111703	R 3/4	R 3/4	51,5	22,0	22,0	32
252.404/2-ES	125699	R 3/4	R 1	40,0	16,0	18,0	36
252.404/3-ES	125700	R 3/4	R 1 1/4	43,0	16,0	20,0	42
252.404/4-ES	125701	R 3/4	R 1 1/2	44,0	16,0	20,0	50
252.305-ES	111707	R 1	R 1	47,0	19,5	19,5	41
252.405/2-ES	125702	R 1	R 1 1/4	45,0	18,0	20,0	42
252.405/3-ES	125703	R 1	R 1 1/2	46,0	18,0	20,0	50
252.405/4-ES	125704	R 1	R 2	50,0	18,0	24,0	62
252.406-ES	125705	R 1 1/4	R 1 1/4	47,0	20,0	20,0	42
252.406/2-ES	125706	R 1 1/4	R 1 1/2	48,0	20,0	20,0	50
252.406/3-ES	125707	R 1 1/4	R 2	53,0	20,0	25,0	62
252.407-ES	125708	R 1 1/2	R 1 1/2	48,0	20,0	20,0	50
252.407/2-ES	125709	R 1 1/2	R 2	53,0	20,0	25,0	60
252.408-ES	125710	R 2	R 2	58,0	25,0	25,0	60
252.408/2-ES	125711	R 2	R 2 1/2	63,0	25,0	28,0	78
252.408/3-ES	125712	R 2	R 3	66,0	25,0	31,0	90
252.409-ES	125713	R 2 1/2	R 2 1/2	66,0	28,0	28,0	78
252.409/2-ES	125714	R 2 1/2	R 3	69,0	28,0	31,0	90
252.410-ES	125715	R 3	R 3	72,0	31,0	31,0	90



252.42-ES



Schottverschraubungen

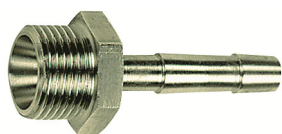
Typen Nr.	Artikel Nr.	Außengewinde	Innengewinde	L1 mm	L2 mm	SW 1 mm	SW 2 mm
252.41-ES	111722	G 1/4	G 1/8	18,0	14,0	17	17
252.42-ES	111723	G 3/8	G 1/4	22,0	17,0	19	24
252.43-ES	111724	G 1/2	G 3/8	27,0	21,0	24	24



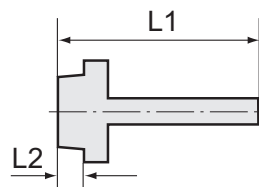
234 B-ES

Sechskant-Überwurfmuttern

Typen Nr.	Artikel Nr.	Gewinde	für Tülle Typen Nr.	L1 mm	SW mm
234 A-ES	111725	G 1/4	236 A-ES + 236 B-ES	15,0	17
234 A/S-ES	111726	G 1/4	236 C-ES	15,0	17
234 B-ES	111727	G 3/8	236 E-ES + 236 F-ES	15,0	19
234 C-ES	111728	G 1/2	236 H-ES	16,0	24
234 C/S-ES	111729	G 1/2	236 J-ES	16,0	24
234 C/L-ES	111730	G 1/2	-	20,0	24
234 C/M-ES	111731	G 3/4	-	16,0	32
234 C/N-ES	111732	G 1	-	18,0	41

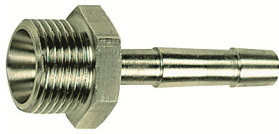


239 E-ES

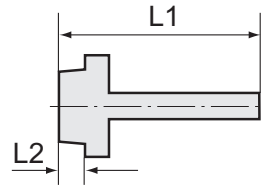


Einschraubschlauchtüllen mit Außengewinde zylindrisch

Typen Nr.	Artikel Nr.	Gewinde	für Schlauch mm	L1 mm	L2 mm	SW mm
239.00-ES	111733	M5	LW 4	15,5	5,0	8
N239.00-ES1	111734	M5	LW 6	23,5	5,0	9
239.01-ES	111735	G 1/8	LW 4	41,5	9,0	14
239.02-ES	111736	G 1/8	LW 6	41,5	9,0	14
N239.02-ES1	111737	G 1/8	LW 8	36,0	7,0	14
239.03-ES	111738	G 1/8	LW 9	48,5	10,0	17
239 A-ES	111739	G 1/4	LW 4	48,5	10,0	17
239 B-ES	111740	G 1/4	LW 6	48,5	10,0	17
N239 B-ES1	111741	G 1/4	LW 8	39,0	9,0	17
239 C-ES	111742	G 1/4	LW 9	48,5	10,0	17
N239 C-ES1	111743	G 1/4	LW 10	39,0	9,0	17
239 C/S-ES	111744	G 1/4	LW 13	48,5	10,0	19
239 D-ES	111745	G 3/8	LW 4	48,5	10,0	19
239 E-ES	111746	G 3/8	LW 6	48,5	10,0	19
N239 E-ES1	111747	G 3/8	LW 8	39,0	9,0	19
239 F-ES	111748	G 3/8	LW 9	48,5	10,0	19
N239 F-ES1	111749	G 3/8	LW 10	39,0	9,0	19
239 F/S-ES	111750	G 3/8	LW 13	48,5	10,0	19
239 G-ES	111751	G 1/2	LW 6	48,5	10,0	24
N239 G-ES1	111752	G 1/2	LW 8	42,0	11,0	24
239 H-ES	111753	G 1/2	LW 9	48,5	10,0	24
N239 H-ES1	111754	G 1/2	LW 10	42,0	11,0	24
239 J-ES	111755	G 1/2	LW 13	50,0	10,0	24
N239 J-ES1	111756	G 1/2	LW 16	53,0	11,0	24
N239 J-ES2	111757	G 1/2	LW 19	53,0	11,0	24
239 K-ES	111758	G 3/4	LW 9	50,5	11,0	27
239 M-ES	111759	G 3/4	LW 13	52,0	11,0	27
239 P-ES	111760	G 3/4	LW 19	50,5	11,0	27
N239 S-ES	111761	G 1	LW 19	55,0	13,0	38
N239 W-ES	111762	G 1	LW 25	55,0	13,0	38
N239 Z-ES	111763	G 1	LW 32	55,0	13,0	38

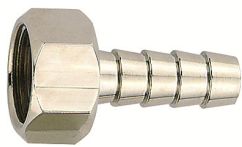


N239 F-ESR

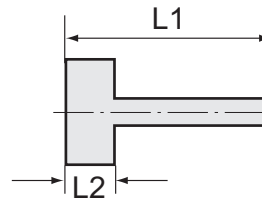


Einschraubschlauchtüllen mit Außengewinde konisch

Typen Nr.	Artikel Nr.	Gewinde	für Schlauch mm	L1 mm	L2 mm	SW mm
N239 C-ESR	111764	R 1/4	LW 9	39,7	9,7	17
N239 F-ESR	111765	R 3/8	LW 9	40,1	10,1	19
N239 FS-ESR	111766	R 3/8	LW 13	43,1	10,1	19
N239 J-ESR	111767	R 1/2	LW 13	47,2	13,2	24
N239 J-ESR2	111768	R 1/2	LW 19	55,2	13,2	24
N239 P-ESR	111769	R 3/4	LW 19	56,2	14,5	32
N239 W-ESR	111770	R 1	LW 25	58,8	16,8	38

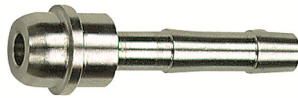


239.19-ES

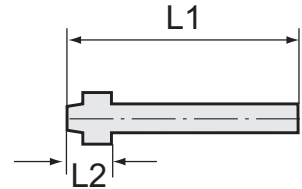


Aufschraubschlauchtüllen mit Innengewinde zylindrisch

Typen Nr.	Artikel Nr.	Gewinde	für Schlauch mm	L1 mm	L2 mm	SW mm
239.10-ES	111771	G 1/8	LW 6	35,0	10,0	12
239.11-ES	111772	G 1/8	LW 8	35,0	10,0	12
239.12-ES	111773	G 1/4	LW 6	36,0	11,0	17
239.13-ES	111774	G 1/4	LW 8	36,0	11,0	17
239.14-ES	111775	G 1/4	LW 10	36,0	11,0	17
239.15-ES	111776	G 1/4	LW 13	40,5	11,0	17
239.18-ES	111777	G 3/8	LW 6	36,0	11,0	19
239.19-ES	111778	G 3/8	LW 8	36,0	11,0	19
239.20-ES	111779	G 3/8	LW 10	36,0	11,0	19
239.21-ES	111780	G 3/8	LW 13	40,5	11,0	19
239.25-ES	111781	G 1/2	LW 6	39,0	14,5	24
239.26-ES	111782	G 1/2	LW 8	39,0	14,5	24
239.27-ES	111783	G 1/2	LW 10	39,0	14,5	24
239.28-ES	111784	G 1/2	LW 13	44,0	14,5	24



236 E-ES



Schlauchtüllen mit Kugelnippel

Typen Nr.	Artikel Nr.	für Schlauch mm	für Überwurfmutter Typen Nr.	L1 mm	L2 mm
236.02-ES	111785	LW 6	-	33,5	6,0
236 A-ES	111786	LW 4	234 A-ES	47,0	13,5
236 B-ES	111787	LW 6	234 A-ES	47,0	13,5
236 C-ES	111788	LW 9	234 A/S-ES	47,0	14,0
236 E-ES	111789	LW 6	234 B-ES	48,5	15,0
236 F-ES	111790	LW 9	234 B-ES	48,5	15,0
236 H-ES	111791	LW 9	234 C/L-ES	48,5	15,0
236 J-ES	111792	LW 13	234 C/S-ES	48,5	15,0



252.22-ES

Muffen mit Außensechskant

Typen Nr.	Artikel Nr.	Gewinde	L1 mm	SW mm
252.20-ES	111793	M5	11,0	8
252.21-ES	111794	G 1/8	22,0	14
252.22-ES	111795	G 1/4	26,0	17
252.23-ES	111796	G 3/8	26,0	22
252.24-ES	111797	G 1/2	30,0	27
252.24/1-ES	111798	G 3/4	36,0	32
252.24/2-ES	111799	G 1	40,0	41



252.32-ES

Muffen mit Außensechskant, reduzierend

Typen Nr.	Artikel Nr.	Gewinde 1	Gewinde 2	L1 mm	SW mm
252.31-ES	111800	G 1/8	M5	12,6	14
252.32-ES	111801	G 1/4	G 1/8	19,5	17
252.33-ES	111802	G 3/8	G 1/4	22,8	22
252.34-ES	111803	G 1/2	G 3/8	24,0	27
252.35-ES	111804	G 3/4	G 1/2	25,0	32
252.36-ES	111805	G 1	G 3/4	25,0	41