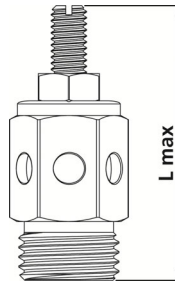
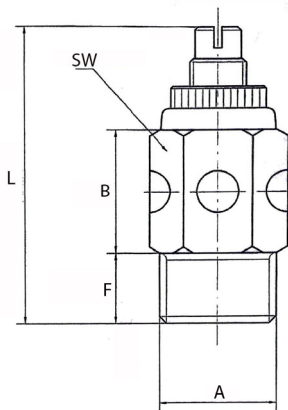


Messing-Gehäuse, einstellbar

Betriebsdruck: 0 - 15 bar
 Betriebstemperatur: -10 °C bis 250 °C



SD14MSEB

Schalldämpfer aus Sinterbronze, Messing-Gehäuse, einstellbar

Artikel Nr.	Typen Nr.	Gewinde A	F mm	B mm	SW mm	L mm	L max. mm
156513	SD18MSEB	G 1/8	6,5	13,0	13	29,0	32,5
156514	SD14MSEB	G 1/4	8,5	16,0	14	36,0	45,0
156515	SD38MSEB	G 3/8	10,0	17,5	17	42,0	47,5
156516	SD12MSEB	G 1/2	10,5	20,0	22	44,0	55,5
156517	SD34MSEB	G 3/4	13,5	24,0	27	55,0	67,0
156518	SD1MSEB	G 1	15,5	31,0	34	64,0	77,5