

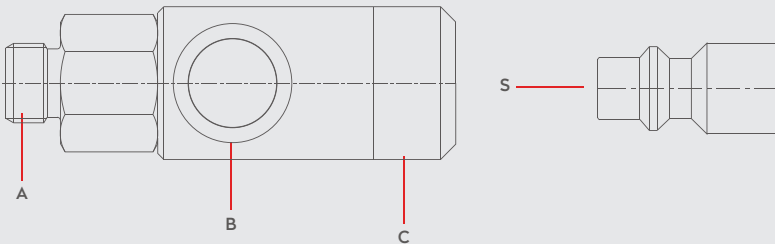


PNEUMATIC COUPLINGS
PNEUMATISCHE KUPPLUNGEN

SERIE 023S.06

DN 5.5

Materials



Material Code

- A = Brass Nickel Plated
- B = Steel Zinc Plated
- B = Aluminium
- S = Steel Nickel Plated

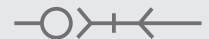


0 - 12 bar
(0-174 PSI)



-20° to + 100°C (NBR)
-4° to + 212°F

Shut Off Type



- OM 190 - 00580
- OM 200 - 00800
- OM 178 - 00925

2 - STAGE
ISO 4414

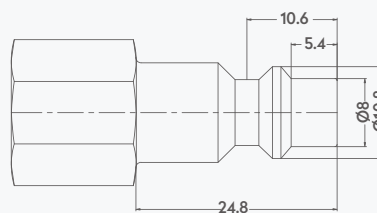
DN

5.5 mm

Options



Plug Profile Serie 023S.06



Compatible with

Industrial interchange	1/4"
TST	024
PARKER - RECTUS	23
CEJN	310
HANSEN	3000
PARKER	20
ATLAS COPCO QIC	08
US-MIL-SPEC-C-4109	

PNEUMATIC COUPLINGS
PNEUMATISCHE KUPPLUNGEN

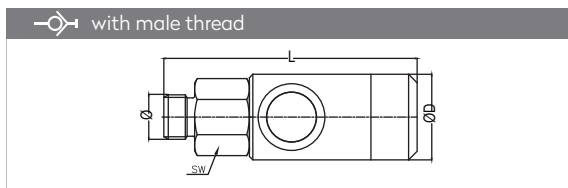
NEW!

 360°
swivel option

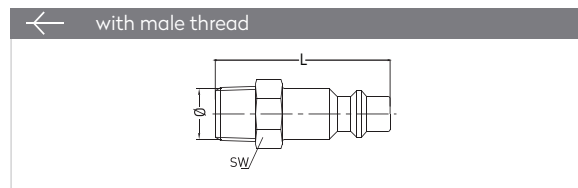
ISO 4414

ISO 6150 - B - 12

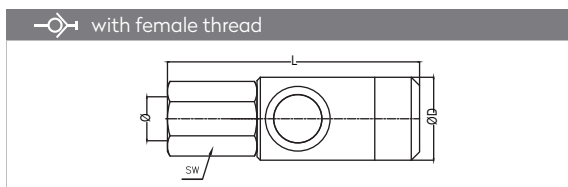
Industrial Interchange 1/4"

SERIE 023S.06
QUICK COUPLINGS SCHNELLKUPPLUNGEN
PLUGS STECKNIPPEL


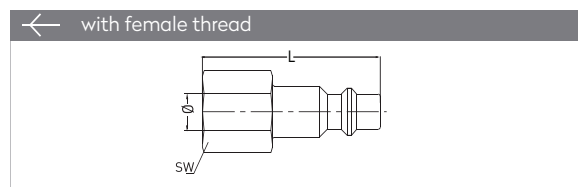
Connection	Part No.	SW	L	ØD
BSP 1/4"	023S.06 EG 13	20	69	26
BSP 3/8"	023S.06 EG 17	20	68	26
BSP 1/2"	023S.06 EG 21	25	70	26



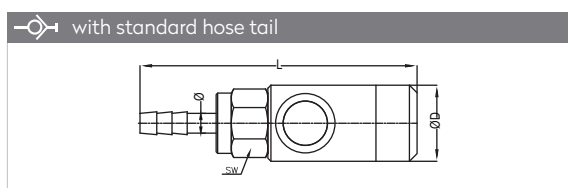
Connection	Part No.	SW	L
BSPT 1/8"	023 RU 10	13	40
BSPT 1/4"	023 RU 13	14	41,8
BSPT 3/8"	023 RU 17	17	41,8
BSPT 1/2"	023 RU 21	22	46
BSP 1/4"	023 EU 13	17	40
BSP 3/8"	023 EU 17	17	40



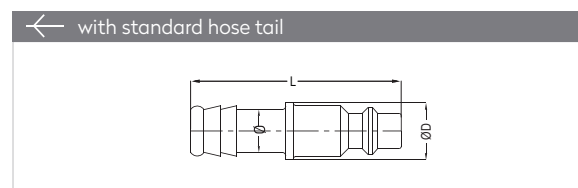
Connection	Part No.	SW	L	ØD
BSP 1/4"	023S.06 DG 13	20	67,5	26
BSP 3/8"	023S.06 DG 17	20	72	26
BSP 1/2"	023S.06 DG 21	25	74	26



Connection	Part No.	SW	L
BSP 1/8"	023 DU 10	13	36
BSP 1/4"	023 DU 13	17	36
BSP 3/8"	023 DU 17	19	36
BSP 1/2"	023 DU 21	24	40



Connection	Part No.	SW	L	ØD
Ø 6 - 1/4"	023S.06 HG 06	20	83,3	26
Ø 8 - 5/16"	023S.06 HG 08	20	83,3	26
Ø 10 - 3/8"	023S.06 HG 10	20	83,3	26



Connection	Part No.	L	ØD
Ø 6 mm	023 HU 06	50	12
Ø 8 mm	023 HU 08	50	12
Ø 9 mm	023 HU 09	50	12
Ø 10 mm	023 HU 10	50	12
Ø 13 mm	023 HU 13	50	14