

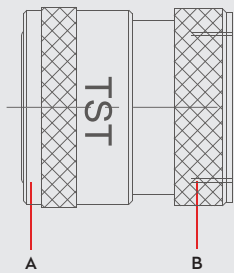


PNEUMATIC COUPLINGS
PNEUMATISCHE KUPPLUNGEN

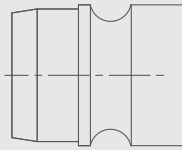
SERIE 110 DN 11



Materials



s



Material Code

A = Brass Chrome Plated

B = Brass Chrome Plated

S = Brass Chrome Plated



0 - 35 bar
(0-507 PSI)



-20° to + 100°C (NBR)
-4° to + 212°F

Shut Off
Type

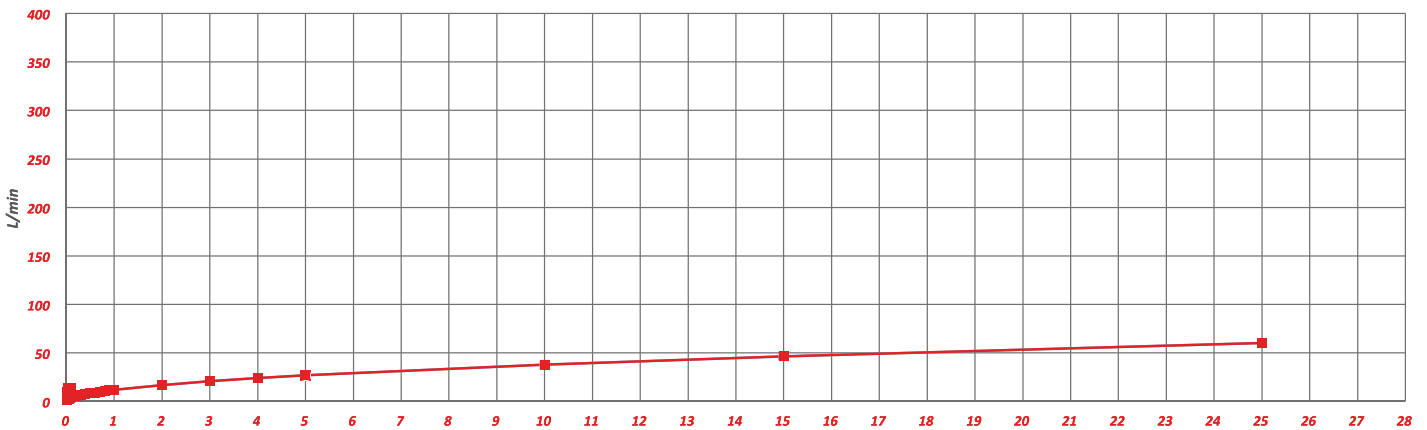


OM 262 - 01510
CON - 1900 - 1400 - 20
OM200 - 00800

FULL FLOW

DN

11 mm



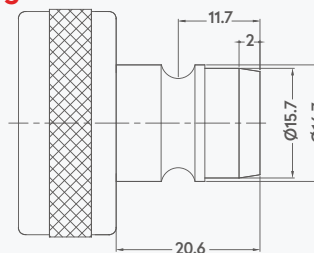
Options

FPM



AISI316
Stainless Steel

Plug Profile Serie 110

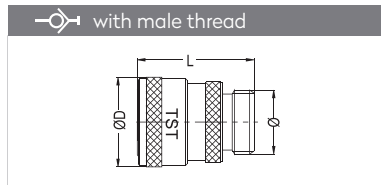


Compatible with

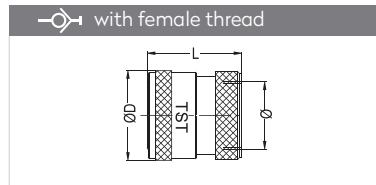
DYROS 100
NITO 1/2" (5350)



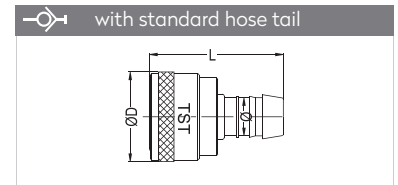
QUICK COUPLINGS SCHNELLKUPPLUNGEN



Connection	Part No.	ØD	L
BSP 3/8"	110 EGF 17	27,3	34,5
BSP 1/2"	110 EGF 21	27,3	35,5
BSP 3/4"	110 EGF 26	27,3	35,5
M 22 x 1,5	110 EGF 22	27,3	35,5

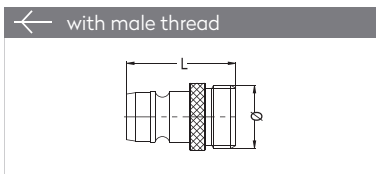


Connection	Part No.	ØD	L
BSP 3/8"	110 DGF 17	27,3	31
BSP 1/2"	110 DGF 21	27,3	31
BSP 3/4"	110 DGF 26	27,3	33
M 22 x 1,5	110 DGF 22	27,3	31

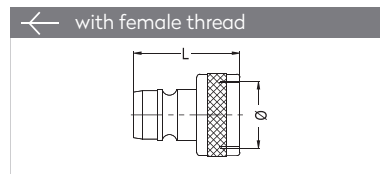


Connection	Part No.	L	ØD
Ø 10 mm - 3/8"	110 HGF 10	27,3	43
Ø 13 mm - 1/2"	110 HGF 13	27,3	43
Ø 16 mm - 5/8"	110 HGF 16	27,3	43
Ø 19 mm - 3/4"	110 HGF 19	27,3	43

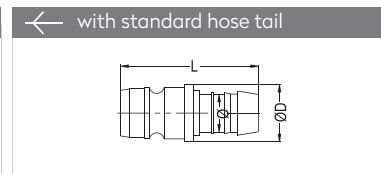
PLUGS STECKNIPPEL



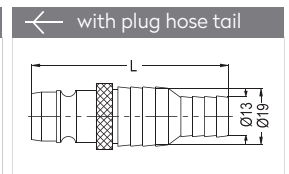
Connection	Part No.	L
BSP 3/8"	110 EU 17	34,6
BSP 1/2"	110 EU 21	34,6
BSP 3/4"	110 EU 26	34,6
M 22 x 1	110 EUM 22	34,6
M 24 x 1	110 EUM 24	37,6
M 28 x 1	110 EUM 28	37,6



Connection	Part No.	L
BSP 3/8"	110 DU 17	30
BSP 1/2"	110 DU 21	32,1
BSP 3/4"	110 DU 26	33,6
M 22 x 1	110 DUM 22-1	30
M 24 x 1	110 DUM 24	31,6
M 22 x 1,5	110 DUM 22	32,1

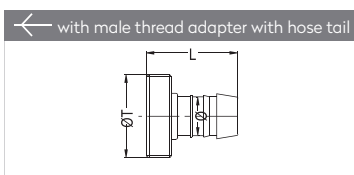


Connection	Part No.	L	ØD
Ø 10 mm - 3/8"	110 HU 10	16,7	41,6
Ø 13 mm - 1/2"	110 HU 13	16,7	41,6
Ø 16 mm - 5/8"	110 HU 16	17	41,6
Ø 19 mm - 3/4"	110 HU 19	20	41,6

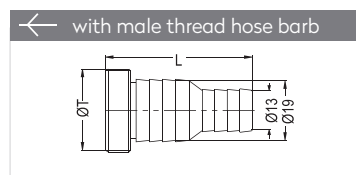


Connection	Part No.	L
Ø 13 - Ø 19	110 HU 13/19	65

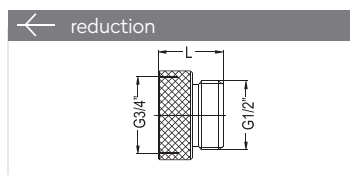
ACCESSORIES ZUBEHÖR



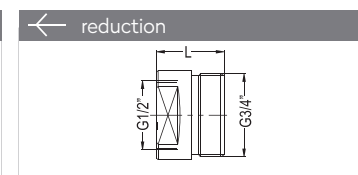
Connection	Part No.	L
1/2" - Ø 13	110 GU 13-1	29
3/8" - Ø 13	110 GU 13	29
3/4" - Ø 19	110 GU 19	29



Connection	Part No.	ØD	L
BSP 1/2"	110 GU 13/19	Ø13-19	52

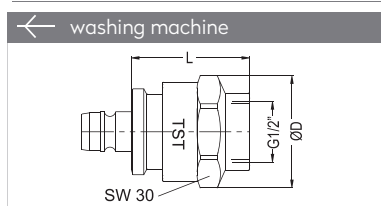


Connection	Part No.	L
BSP 3/4" - 1/2"	110 RD 21	20

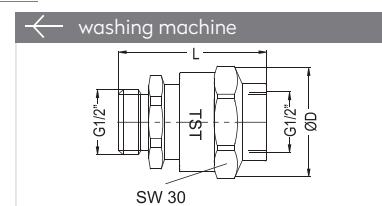


Connection	Part No.	L
BSP 1/2" - 3/4"	110 RD 26	17

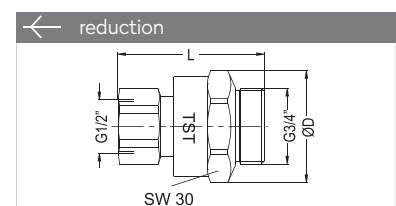
CHECK VALVE RÜCKSCHLAGVENTILE



Connection	Part No.	ØD	L
BSP 1/2"	110 CVD 21	32	60,5



Connection	Part No.	ØD	L
BSP 1/2" - 1/2"	110 CVD 21 - E 21	32	47



Connection	Part No.	ØD	L
BSP 3/4" - BSP 1/2"	110 CVD 21 - E 26	32	47,9