



PNEUMATIC COUPLINGS
PNEUMATISCHE KUPPLUNGEN



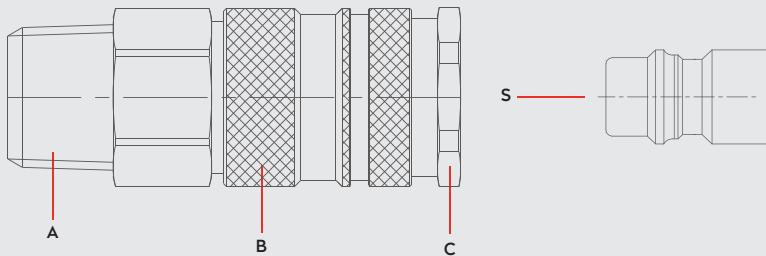
SERIE 095E

SAFETY LOCK

DN 7.4



Materials



Material Code

- A = Brass Nickel Plated
- B = Brass Nickel Plated
- C = Brass Nickel Plated
- S = Brass Nickel Plated

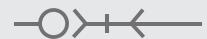


0 - 35 bar
(0-508 PSI)



-20° to + 100°C (NBR)
-4° to + 212°F

Shut Off
Type



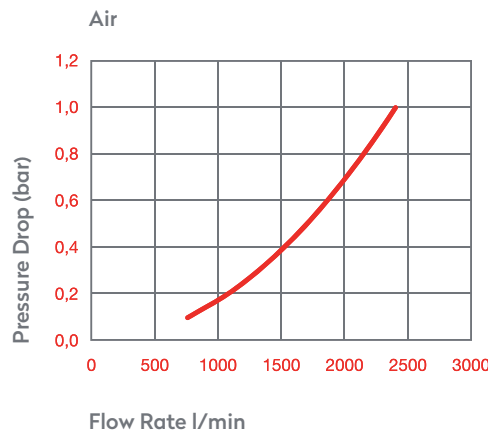
025GC00M
OM 250 - 00500
OM 100 - 01000

FLOW

1700 lt/min

DN

7.4 mm



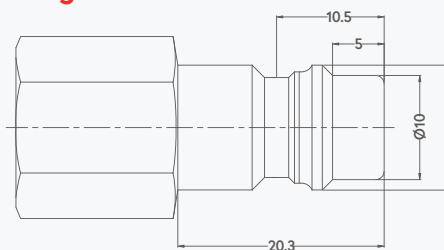
Options

EPDM

AISI303
Stainless Steel

AISI316
Stainless Steel

Plug Profile Serie 095E

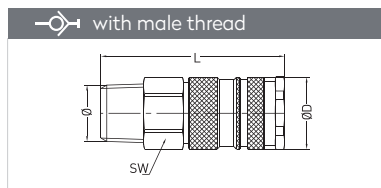


Compatible with

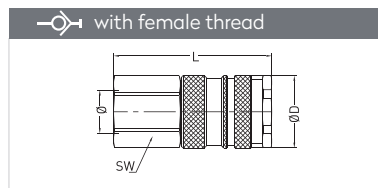
TST SWING COUPLING M
PARKER - RECTUS 95KS
CEJN 344



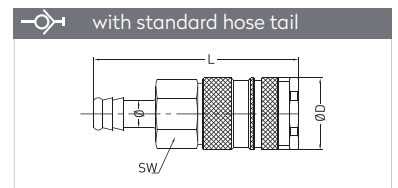
QUICK COUPLINGS SCHNELLKUPPLUNGEN



Connection	Part No.	SW	L	ØD
BSPT 1/4"	095 RGE 13	19	59,3	23
BSPT 3/8"	095 RGE 17	19	60,3	23
BSPT 1/2"	095 RGE 21	22	54,3	23

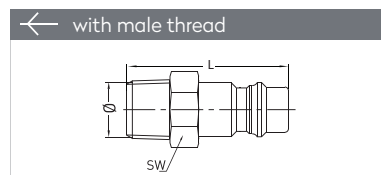


Connection	Part No.	SW	L	ØD
BSP 1/4"	095 DGE 13	19	54,3	23
BSP 3/8"	095 DGE 17	19	54,3	23
BSP 1/2"	095 DGE 21	24	56,3	23

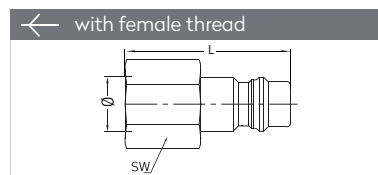


Connection	Part No.	SW	L	ØD
6 mm - 1/4"	095 HGE 06	19	70,3	23
7 mm - 9/32"	095 HGE 07	19	70,3	23
8 mm - 5/16"	095 HGE 08	19	70,3	23
9 mm - 5/14"	095 HGE 09	19	70,3	23
10 mm - 3/8"	095 HGE 10	19	70,3	23
13 mm - 1/2"	095 HGE 13	19	70,3	23

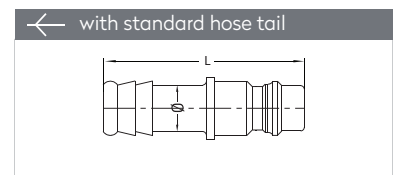
PLUGS STECKNIPPEL



Connection	Part No.	SW	L
BSPT 1/4"	095 RUE 13	14	38,5
BSPT 3/8"	095 RUE 17	17	38,5



Connection	Part No.	SW	L
BSP 1/4"	095 DUE 13	17	33
BSP 3/8"	095 DUE 17	19	33



Connection	Part No.	L	ØD
6 mm - 1/4"	095 HUE 06	46	14
9 mm - 5/14"	095 HUE 09	46	14
10 mm - 3/8"	095 HUE 10	46	14