

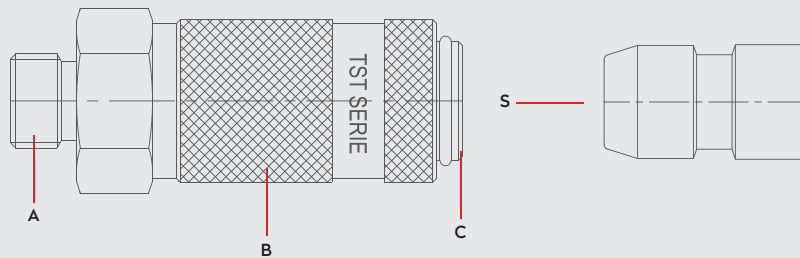


PNEUMATIC COUPLINGS  
PNEUMATISCHE KUPPLUNGEN

SERIE 051 DN6



**Materials**



**Material Code**

- A = Brass Nickel Plated
- B = Steel Nickel Plated
- C = Steel Zinc Plated
- S = Steel Nickel Plated

0 - 50 bar  
(0-725 PSI)

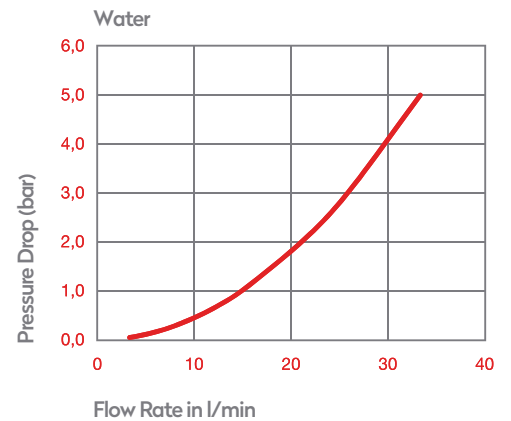
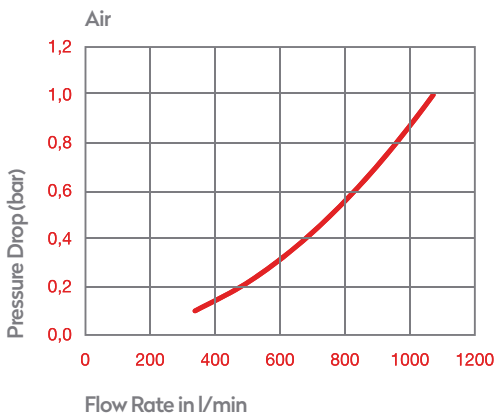
-20° to + 100°C (NBR)  
-4° to + 212°F

**Shut Off Type**

OM 200 - 01100  
OM 200 - 00700  
OM 200 - 01600

**FLOW** 800 lt/min

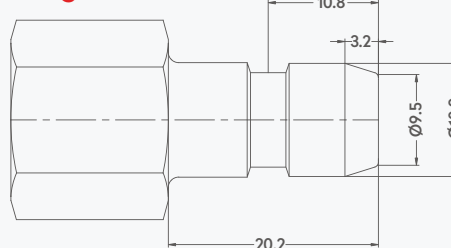
**DN** 6 mm



**Options**



**Plug Profile Serie 051**

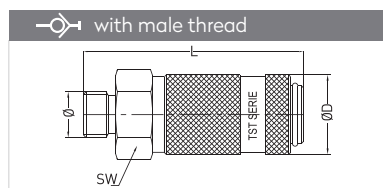


**Compatible with**

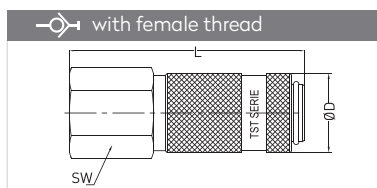
- TST 206
- PARKER - RECTUS 51
- WALTHER SP 002, SG 006



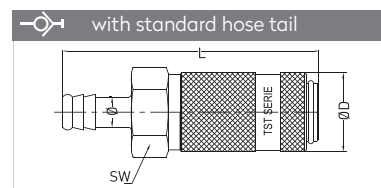
## QUICK COUPLINGS SCHNELLKUPPLUNGEN



Connection	Part No.	SW	L	ØD
BSP 1/4"	051 EG 13	21	60,7	22
BSP 3/8"	051 EG 17	21	60,7	22
BSP 1/2"	051 EG 21	22	63,7	22

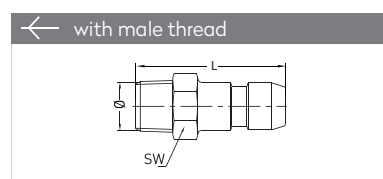


Connection	Part No.	SW	L	ØD
BSP 1/4"	051 DG 13	21	62,7	22
BSP 3/8"	051 DG 17	21	62,7	22
BSP 1/2"	051 DG 21	24	63,7	22

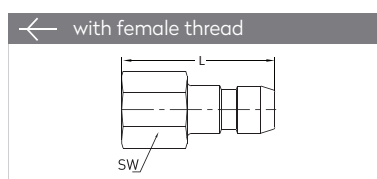


Connection	Part No.	SW	L	ØD
6 mm - 1/4"	051 HG 06	21	75	22
9 mm - 5/14"	051 HG 09	21	75	22
11 mm - 7/16"	051 HG 11	21	75	22
13 mm - 1/2"	051 HG 13	21	75	22

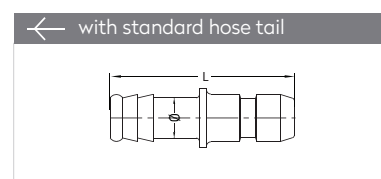
## PLUGS STECKNIPPEL



Connection	Part No.	SW	L
BSP 1/8"	051 EU 10	14	33
BSP 1/4"	051 EU 13	17	35
BSP 3/8"	051 EU 17	19	36
BSP 1/2"	051 EU 21	22	36



Connection	Part No.	SW	L
BSP 1/8"	051 DU 10	14	30
BSP 1/4"	051 DU 13	17	34
BSP 3/8"	051 DU 17	19	34



Connection	Part No.	L
6 mm - 1/4"	051 HU 06	44
9 mm - 5/14"	051 HU 09	46
11 mm - 7/16"	051 HU 11	46
13 mm - 1/2"	051 HU 13	46