



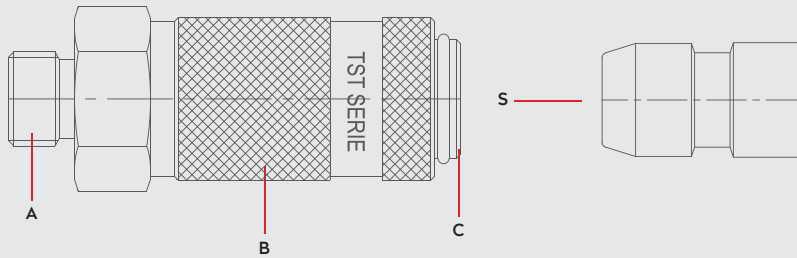
PNEUMATIC COUPLINGS  
PNEUMATISCHE KUPPLUNGEN

SERIE 051B

DN 6



**Materials**



**Material Code**

- A = Brass Nickel Plated
- B = Steel Nickel Plated
- C = Steel Zinc Plated
- S = Steel Nickel Plated



0 - 50 bar  
(0-725 PSI)



-20° to + 100°C (NBR)  
-4° to + 212°F

**Shut Off Type**



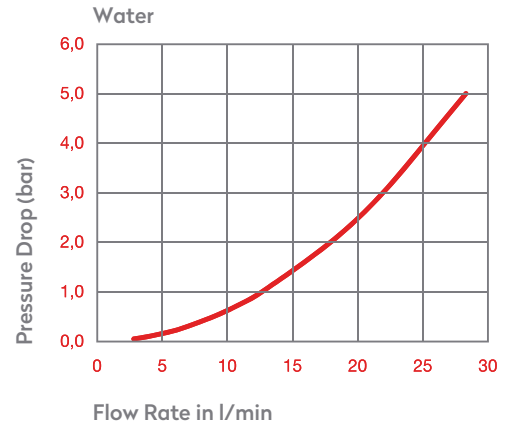
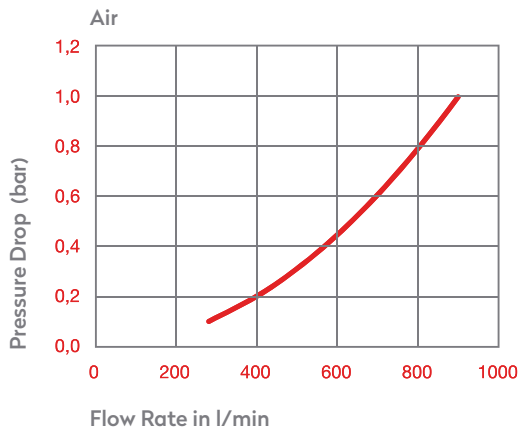
OM 200 - 00700  
OM 200 - 01100  
OM 200 - 01600

**FLOW**

660 lt/min

**DN**

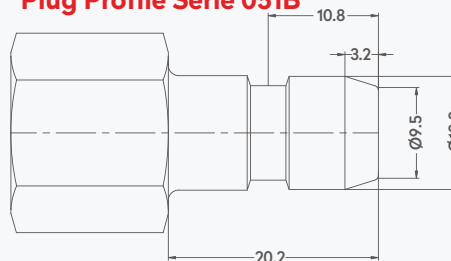
**6 mm**



**Options**

FPM

**Plug Profile Serie 051B**

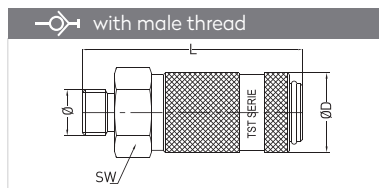


**Compatible with**

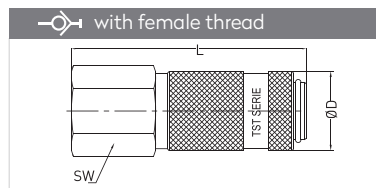
- TST 206
- PARKER - RECTUS 52KB
- WALTHER SP 006



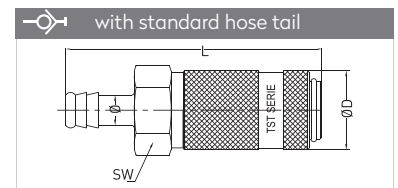
## QUICK COUPLINGS SCHNELLKUPPLUNGEN



Connection	Part No.	SW	L	ØD
BSP 1/4"	051 EGB 13	21	60,7	22
BSP 3/8"	051 EGB 17	21	60,7	22
BSP 1/2"	051 EGB 21	22	63,7	22

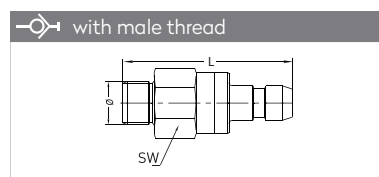


Connection	Part No.	SW	L	ØD
BSP 1/4"	051 DGB 13	21	62,7	22
BSP 3/8"	051 DGB 17	21	62,7	22
BSP 1/2"	051 DGB 21	24	63,7	22

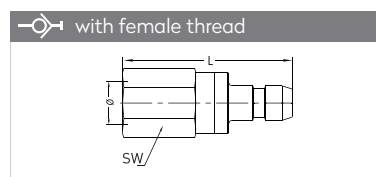


Connection	Part No.	SW	L	ØD
6 mm - 1/4"	051 HGB 06	21	75	22
9 mm - 5/14"	051 HGB 09	21	75	22
11 mm - 7/16"	051 HGB 11	21	75	22
13 mm - 1/2"	051 HGB 13	21	75	22

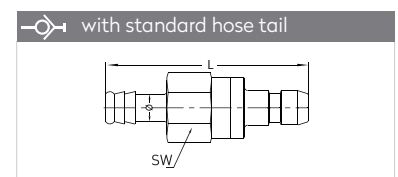
## PLUGS STECKNIPPEL



Connection	Part No.	SW	L
BSP 1/8"	051 EUB 10	21	43
BSP 1/4"	051 EUB 13	21	45,5
BSP 3/8"	051 EUB 17	21	45,5



Connection	Part No.	SW	L
BSP 1/8"	051 DUB 10	21	45,5
BSP 1/4"	051 DUB 13	21	47,5
BSP 3/8"	051 DUB 17	21	47,5



Connection	Part No.	SW	L
6 mm - 1/4"	051 HUB 06	21	59,8
9 mm - 5/14"	051 HUB 09	21	59,8
11 mm - 7/16"	051 HUB 11	21	59,8
13 mm - 1/2"	051 HUB 13	21	59,8