



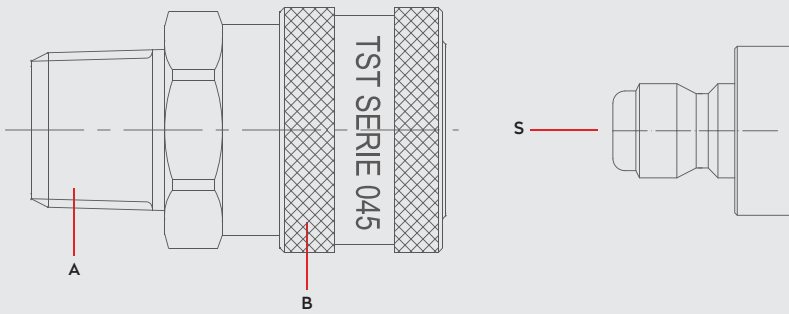
PNEUMATIC COUPLINGS
PNEUMATISCHE KUPPLUNGEN

DN 3-45

SERIE 045



Materials



Material Code

A = Brass

B = Brass

S = Brass



BRASS : 0 - 305 bar
STEEL : 0 - 340 bar
STAINLESS : 0 - 440 bar



-20° to +100°C (NBR)
-4° to +212°F

Options

FPM

STEEL

NICKEL

AISI303
Stainless Steel

AISI316
Stainless Steel

Compatible with

PARKER - RECTUS 45
PARKER ST

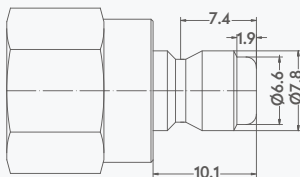
Shut Off Type



Plug Profile Serie 045

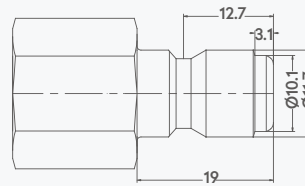
OM 178 - 00605

■045.03



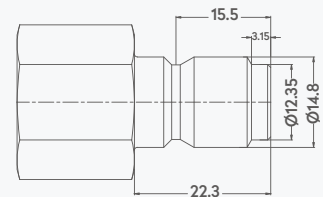
OM 262 - 00955

■045.06



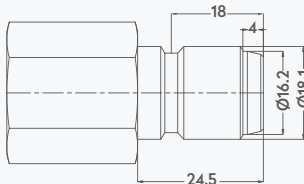
OM 262 - 01235

■045.10



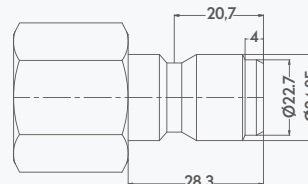
OM 280 - 01600

■045.13



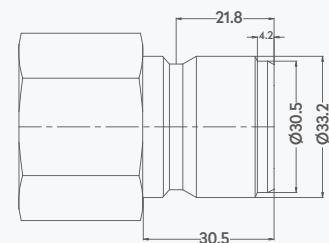
OM 353 - 02340

■045.19



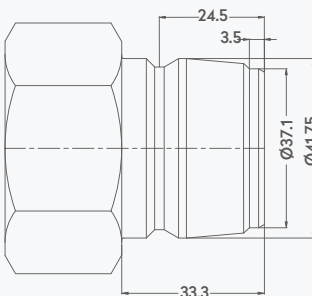
OM 300 - 03100

■045.25



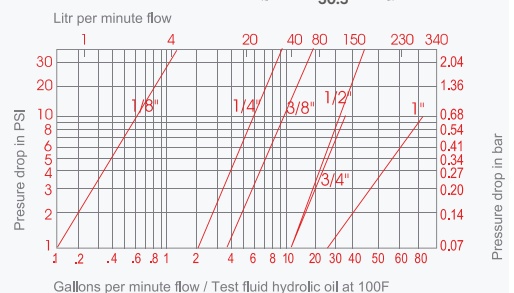
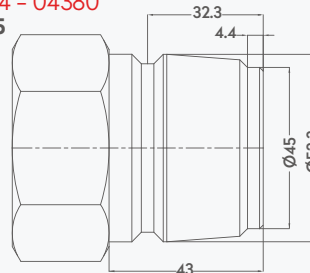
OM 353 - 03770

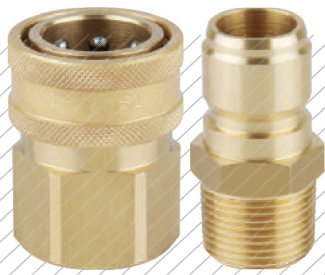
■045.32



OM 534 - 04380

■045.45

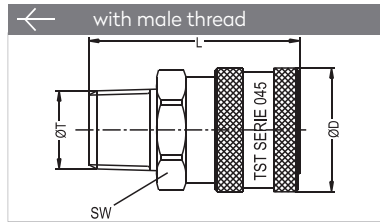




Truflate

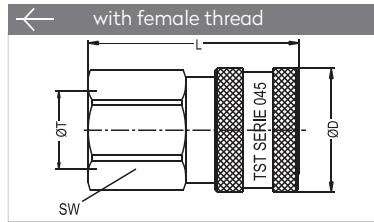
Straight Through

QUICK COUPLINGS SCHNELLKUPPLUNGEN



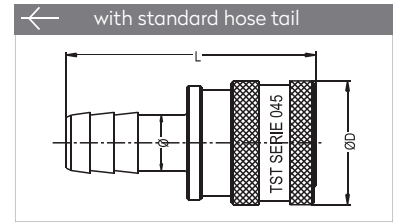
| Connection | Part No. | SW | L | ØD |
|------------|---------------|----|------|----|
| BSPT 1/8" | 045.03 RGF 10 | 14 | 25 | 16 |
| BSPT 1/4" | 045.06 RGF 13 | 21 | 39,5 | 24 |
| BSPT 3/8" | 045.10 RGF 17 | 24 | 43 | 28 |
| BSPT 1/2" | 045.13 RGF 21 | 27 | 51 | 32 |
| BSPT 3/4" | 045.19 RGF 26 | 36 | 57 | 41 |
| BSPT 1" | 045.25 RGF 33 | 42 | 66,5 | 50 |

| | | | | |
|----------|---------------|----|------|----|
| NPT 1/8" | 045.03 TGF 10 | 14 | 26 | 16 |
| NPT 1/4" | 045.06 TGF 13 | 21 | 39,5 | 24 |
| NPT 3/8" | 045.10 TGF 17 | 24 | 43 | 28 |
| NPT 1/2" | 045.13 TGF 21 | 27 | 52 | 32 |
| NPT 3/4" | 045.19 TGF 26 | 36 | 58 | 41 |
| NPT 1" | 045.25 TGF 33 | 42 | 65,5 | 50 |



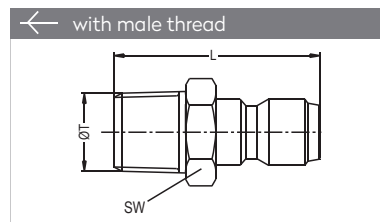
| Connection | Part No. | SW | L | ØD |
|------------|---------------|----|------|----|
| BSP 1/8" | 045.03 DGF 10 | 14 | 25 | 16 |
| BSP 1/4" | 045.06 DGF 13 | 21 | 37 | 24 |
| BSP 3/8" | 045.10 DGF 17 | 24 | 40 | 28 |
| BSP 1/2" | 045.13 DGF 21 | 27 | 49,5 | 32 |
| BSP 3/4" | 045.19 DGF 26 | 36 | 53,3 | 41 |

| | | | | |
|----------|---------------|----|------|----|
| NPT 1/8" | 045.03 NGF 10 | 14 | 25 | 16 |
| NPT 1/4" | 045.06 NGF 13 | 21 | 37 | 24 |
| NPT 3/8" | 045.10 NGF 17 | 24 | 40 | 28 |
| NPT 1/2" | 045.13 NGF 21 | 27 | 49,5 | 32 |
| NPT 3/4" | 045.19 NGF 26 | 36 | 54,8 | 41 |



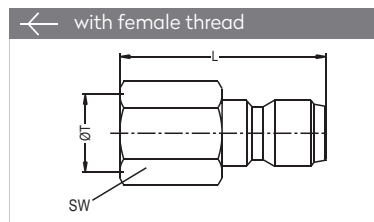
| Connection | Part No. | L | ØD |
|----------------|---------------|----|----|
| Ø 3 mm - 1/8" | 045.03 HGF 03 | 35 | 16 |
| Ø 6 mm - 1/4" | 045.06 HGF 06 | 52 | 24 |
| Ø 10 mm - 3/8" | 045.10 HGF 10 | 51 | 28 |
| Ø 13 mm - 1/2" | 045.13 HGF 13 | 55 | 32 |
| Ø 19 mm - 3/4" | 045.19 HGF 19 | 60 | 41 |
| Ø 25 mm - 1" | 045.25 HGF 25 | 82 | 50 |

PLUGS STECKNIPPEL



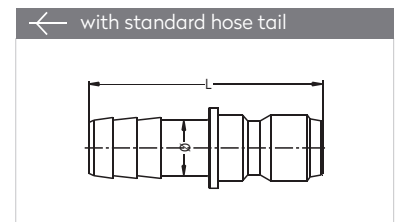
| Connection | Part No. | SW | L |
|------------|--------------|----|------|
| BSPT 1/8" | 045.03 RU 10 | 12 | 27,9 |
| BSPT 1/4" | 045.06 RU 13 | 14 | 36,5 |
| BSPT 3/8" | 045.10 RU 17 | 19 | 41 |
| BSPT 1/2" | 045.13 RU 21 | 22 | 48,2 |
| BSPT 3/4" | 045.19 RU 26 | 27 | 56 |
| BSPT 1" | 045.25 RU 33 | 38 | 63,5 |

| | | | |
|----------|--------------|----|------|
| NPT 1/8" | 045.03 TU 10 | 12 | 26,4 |
| NPT 1/4" | 045.06 TU 13 | 14 | 36,5 |
| NPT 3/8" | 045.10 TU 17 | 19 | 41,5 |
| NPT 1/2" | 045.13 TU 21 | 22 | 48,2 |
| NPT 3/4" | 045.19 TU 26 | 27 | 57 |
| NPT 1" | 045.25 TU 33 | 38 | 63,5 |



| Connection | Part No. | SW | L |
|------------|--------------|----|------|
| BSPT 1/8" | 045.03 DU 10 | 14 | 24,4 |
| BSPT 1/4" | 045.06 DU 13 | 17 | 35,7 |
| BSPT 3/8" | 045.10 DU 17 | 22 | 41,5 |
| BSPT 1/2" | 045.13 DU 21 | 24 | 50 |
| BSPT 3/4" | 045.19 DU 26 | 30 | 49 |
| BSPT 1" | 045.25 DU 33 | 40 | 60 |

| | | | |
|----------|--------------|----|------|
| NPT 1/8" | 045.03 NU 10 | 14 | 24,4 |
| NPT 1/4" | 045.06 NU 13 | 17 | 35,7 |
| NPT 3/8" | 045.10 NU 17 | 22 | 41,5 |
| NPT 1/2" | 045.13 NU 21 | 24 | 50 |
| NPT 3/4" | 045.19 NU 26 | 30 | 52 |
| NPT 1" | 045.25 NU 33 | 38 | 62,5 |



| Connection | Part No. | L | Ø |
|----------------|--------------|----|----|
| Ø 3 mm - 1/8" | 045.03 HU 03 | 32 | 3 |
| Ø 6 mm - 1/4" | 045.06 HU 06 | 48 | 6 |
| Ø 10 mm - 3/8" | 045.10 HU 10 | 51 | 10 |
| Ø 13 mm - 1/2" | 045.13 HU 13 | 53 | 13 |
| Ø 19 mm - 3/4" | 045.19 HU 19 | 58 | 19 |
| Ø 25 mm - 1" | 045.25 HU 25 | 83 | 25 |

| Connection | Brass / Bar | Steel / Bar | Stainless / Bar |
|------------|-------------|-------------|-----------------|
| 1/8" | 170 | 170 | 285 |
| 1/4" | 305 | 340 | 440 |
| 3/8" | 185 | 240 | 340 |
| 1/2" | 170 | 185 | 205 |
| 3/4" | 135 | 185 | 205 |
| 1" | 70 | 135 | 100 |