

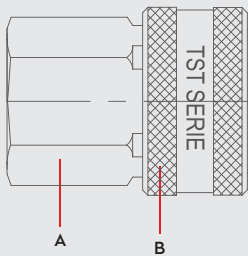


PNEUMATIC COUPLINGS
PNEUMATISCHE KUPPLUNGEN

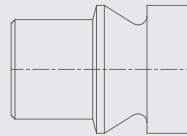
SERIE 040 DN9



Materials



S



Material Code

A = Brass

B = Steel Nickel Plated

S = Steel Zinc Plated

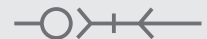


0 - 35 bar
(0-508 PSI)



-20° to + 100°C (NBR)
-4° to + 212°F

Shut Off
Type



OM 353 - 01105

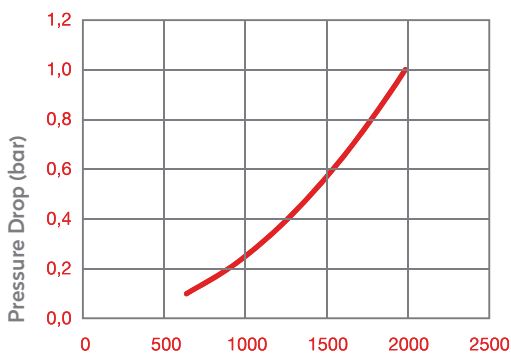
FLOW

3000 lt/min

DN

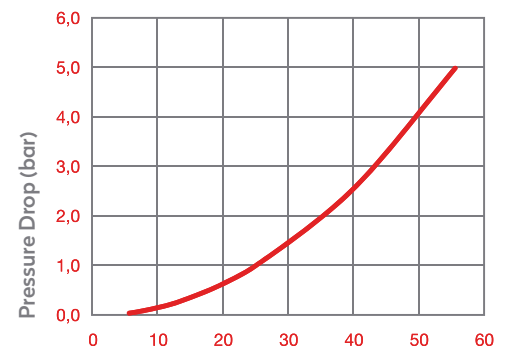
9 mm

Air



Flow Rate in l/min

Water



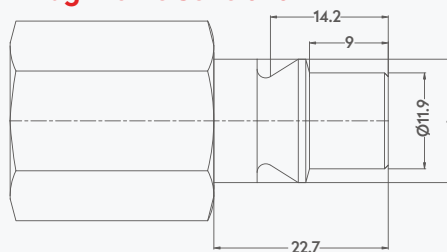
Flow Rate in l/min

Options

NICKEL

SWING
J Series

Plug Profile Serie 040



Compatible with

TST SWING COUPLING J
PARKER - RECTUS 40
ARO 310
ORION 44520, 44530



ARO 310

tst®

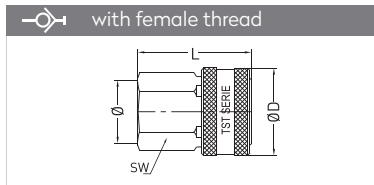
PNEUMATIC COUPLINGS
PNEUMATISCHE KUPPLUNGEN

SERIE 040

PNEUMATIC COUPLINGS

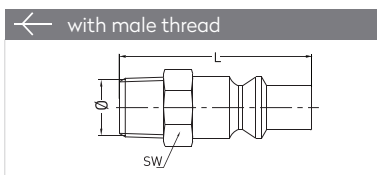
SERIE 040

QUICK COUPLINGS SCHNELLKUPPLUNGEN

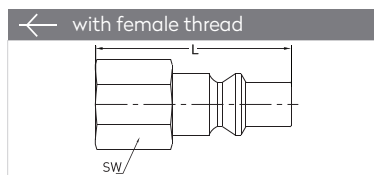


Connection	Part No.	SW	L	ØD
BSP 3/8"	040 DG 17	27	46	32
BSP 1/2"	040 DG 21	27	48	32

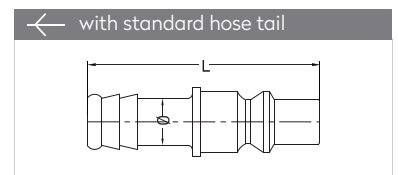
PLUGS STECKNIPPEL



Connection	Part No.	SW	L
BSPT 3/8"	040 RU 17	19	41
BSPT 1/2"	040 RU 21	24	45
BSPT 3/4"	040 RU 26	27	51



Connection	Part No.	SW	L
BSPT 3/8"	040 DU 17	21	39
BSPT 1/2"	040 DU 21	24	42
BSPT 3/4"	040 DU 26	32	45



Connection	Part No.	L
6 mm - 1/4"	040 HU 06	56
8 mm - 5/16"	040 HU 08	56
10 mm - 3/8"	040 HU 10	56
13 mm - 1/2"	040 HU 13	56
16 mm - 5/8"	040 HU 16	56
19 mm - 3/4"	040 HU 19	62