



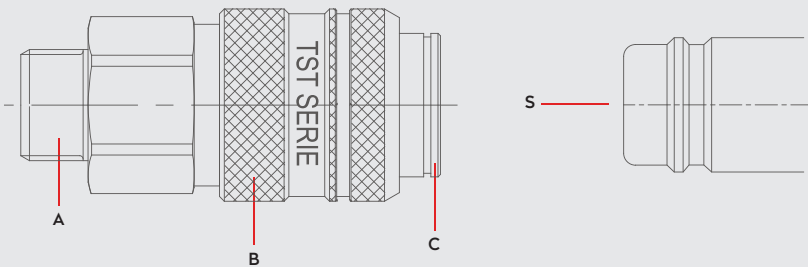
PNEUMATIC COUPLINGS
PNEUMATISCHE KUPPLUNGEN

SERIE 038

DN15



Materials



Material Code

- A = Brass
- B = Brass
- C = Brass
- S = Brass

0 - 35 bar
(0-508 PSI)

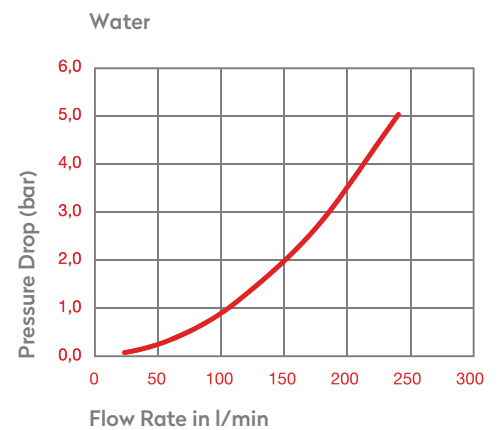
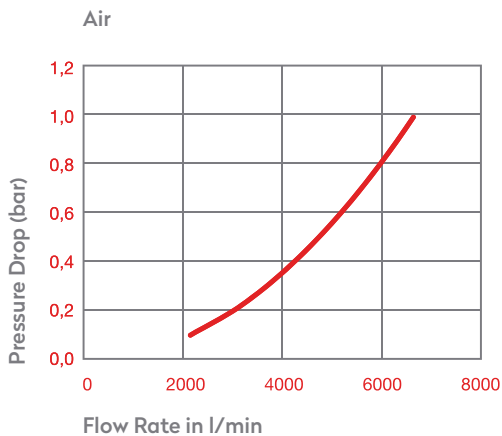
-20° to + 100°C (NBR)
-4° to + 212°F

Shut Off Type

OM 400 - 01600
OM 353 - 01295
OM 178 - 02195

FLOW 7500 lt/min

DN 15 mm



Options

FPM

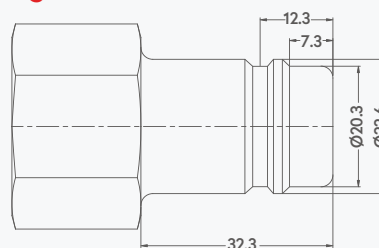
NICKEL

038B

AISI303
Stainless Steel

AISI316
Stainless Steel

Plug Profile Serie 038

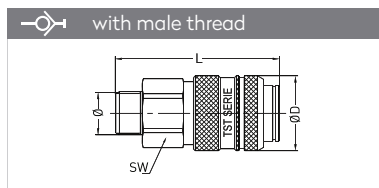


Compatible with

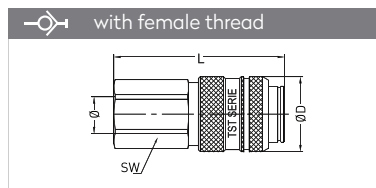
PARKER - RECTUS 38
HANSEN 6000



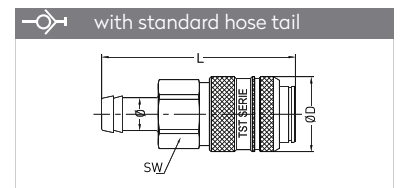
QUICK COUPLINGS SCHNELLKUPPLUNGEN



Connection	Part No.	SW	L	ØD
BSP 1/2"	038 EG 21	35	89,1	40
BSP 3/4"	038 EG 26	35	92,1	40
BSP 1"	038 EG 33	35	92,1	40

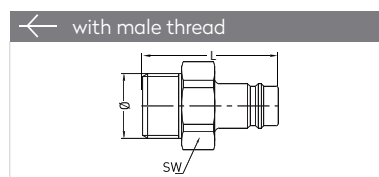


Connection	Part No.	SW	L	ØD
BSP 1/2"	038 DG 21	35	91,1	40
BSP 3/4"	038 DG 26	34	91,1	40
BSP 1"	038 DG 33	41	92,1	40

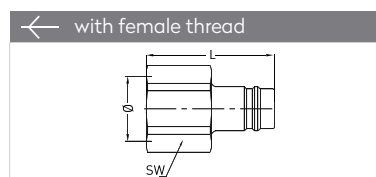


Connection	Part No.	SW	L	ØD
13 mm - 1/2"	038 HG 13	35	107,1	40
16 mm - 5/8"	038 HG 16	35	115,1	40
19 mm - 3/4"	038 HG 19	35	115,1	40
25 mm - 1"	038 HG 25	35	115,1	40

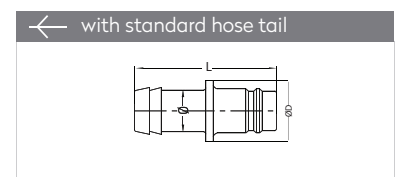
PLUGS STECKNIPPEL



Connection	Part No.	SW	L
BSP 1/2"	038 EU 21	24	54
BSP 3/4"	038 EU 26	27	58
BSP 1"	038 EU 33	36	63



Connection	Part No.	SW	L
BSP 1/2"	038 DU 21	27	55
BSP 3/4"	038 DU 26	30	54
BSP 1"	038 DU 33	36	63



Connection	Part No.	L	ØD
13 mm - 1/2"	038 HU 13	65	25
16 mm - 5/8"	038 HU 16	76	25
19 mm - 3/4"	038 HU 19	76	25
25 mm - 1"	038 HU 25	76	30