



PNEUMATIC COUPLINGS  
PNEUMATISCHE KUPPLUNGEN

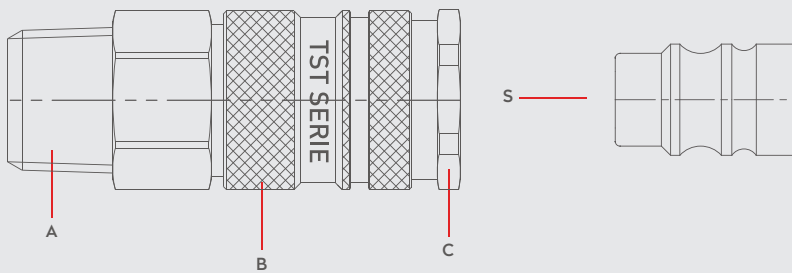


SERIE 025E

DN 7.8



Materials



Material Code

- A = Brass Nickel Plated
- B = Steel Nickel Plated
- C = Brass Nickel Plated
- S = Steel Nickel Plated

0 - 35 bar  
(0-508 PSI)

-20° to + 100°C (NBR)  
-4° to + 212°F

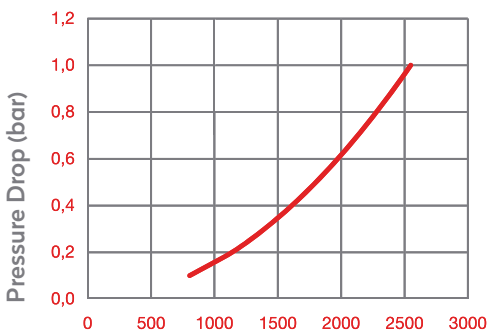
Shut Off Type

OM 250 - 00500  
OM 100 - 01000  
025 GC 00M

**SAFETY LOCK**

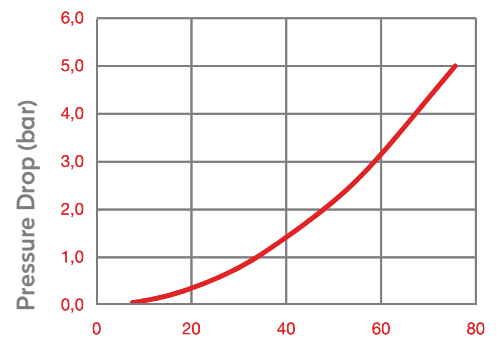
**DN 7.8 mm**

Air



Flow Rate l/min

Water



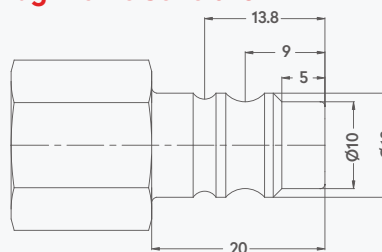
Flow Rate l/min

Options

**AISI303**  
Stainless Steel

025D

Plug Profile Serie 025D

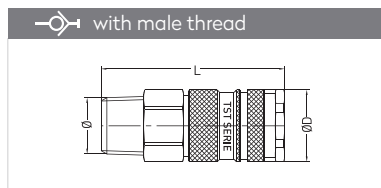


Compatible with

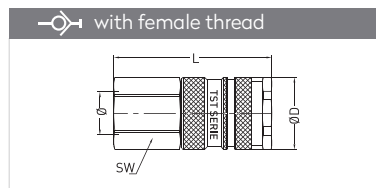
PARKER - RECTUS 25KS



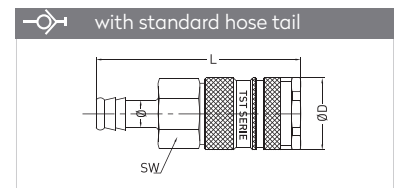
## QUICK COUPLINGS SCHNELLKUPPLUNGEN



Connection	Part No.	SW	L	ØD
BSPT 1/4"	025 RGE 13	19	59,3	23
BSPT 3/8"	025 RGE 17	19	60,3	23
BSPT 1/2"	025 RGE 21	22	54,3	23

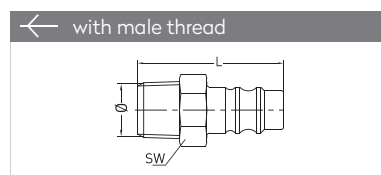


Connection	Part No.	SW	L	ØD
BSP 1/4"	025 DGE 13	19	54,3	23
BSP 3/8"	025 DGE 17	19	54,3	23
BSP 1/2"	025 DGE 21	24	56,3	23

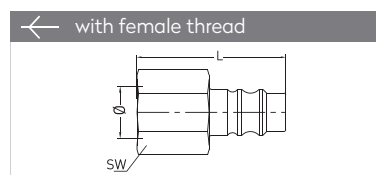


Connection	Part No.	SW	L	ØD
6 mm - 1/4"	025 HGE 06	19	70,3	23
8 mm - 5/16"	025 HGE 08	19	70,3	23
9 mm - 5/14"	025 HGE 09	19	70,3	23
10 mm - 3/8"	025 HGE 10	19	70,3	23
13 mm - 1/2"	025 HGE 13	19	70,3	23

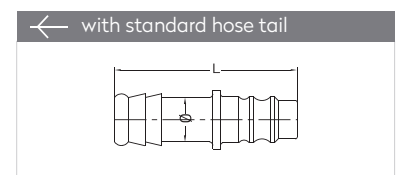
## PLUGS STECKNIPPEL



Connection	Part No.	SW	L
BSPT 1/4"	025 RUE 13	14	37
BSPT 3/8"	025 RUE 17	17	38
BSPT 1/2"	025 RUE 21	22	43



Connection	Part No.	SW	L
BSP 1/8"	025 DUE 10	14	31
BSP 1/4"	025 DUE 13	17	33
BSP 3/8"	025 DUE 17	19	33
BSP 1/2"	025 DUE 21	24	36



Connection	Part No.	L	ØD
6 mm - 1/4"	025 HUE 06	48	12
8 mm - 5/16"	025 HUE 08	48	12
9 mm - 5/14"	025 HUE 09	48	12
10 mm - 3/8"	025 HUE 10	48	12
13 mm - 1/2"	025 HUE 13	48	15