



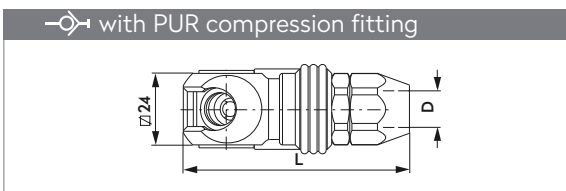
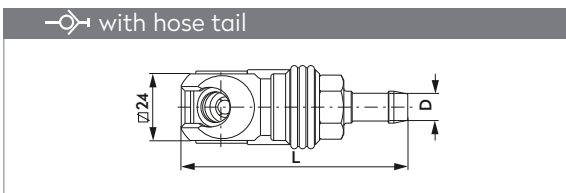
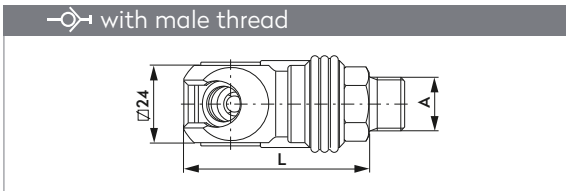
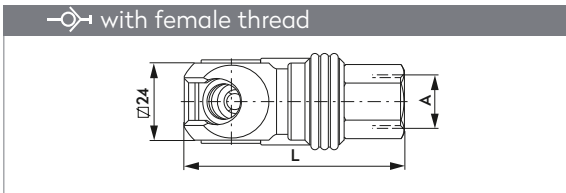
tst®

SC Series D

DN8
3/8"



SWING COUPLING SCHWENKUPPLUNG



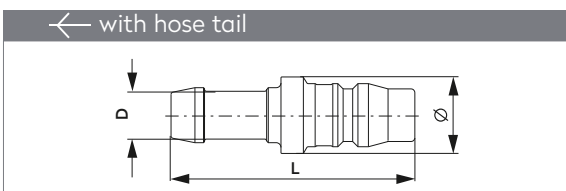
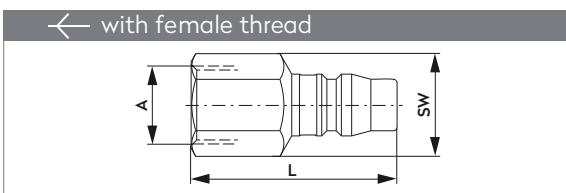
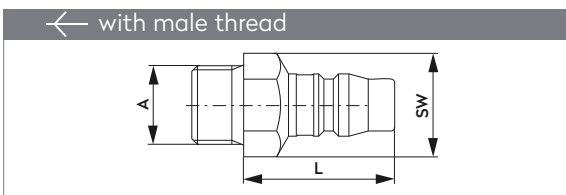
A	Part No.	L	L (swivel)
G1/4	205 00 018	68,5	74,5
G3/8	205 00 019	68,5	74,5
G1/2	205 00 020	69,5	75,5
NPT1/4	205 00 034	68,5	74,5
NPT3/8	205 00 035	68,5	74,5
NPT1/2	205 00 036	73,5	79,5

A	Part No.	L	L (swivel)
G1/4	205 00 053	57,5	63,5
G3/8	205 00 021	57,5	63,5
G1/2	205 00 022	58,5	64,5
NPT1/4	205 00 426	56,2	62,2
NPT3/8	205 00 037	56,2	62,2
NPT1/2	205 00 038	58,5	64,5

A	Part No.	L	L (swivel)
8 mm 5/16"	205 00 054	81,5	87,5
10 mm 3/8"	205 00 055	81,5	87,5
13 mm 1/2"	205 00 056	81,5	87,5

A	Part No.	L
6.5 X 10	205 00 057	72,8
8 X 12	205 00 058	75,8
11 X 16	205 00 059	80,8

PLUG STECKNIPPEL



A	Part No.	L	SW
G1/4	255 00 032	32,0	14
G3/8	255 00 033	32,0	19
G1/2	255 00 034	32,0	24
NPT1/4	255 00 058	28,7	14
NPT3/8	255 00 059	28,7	19
NPT1/2	255 00 060	33,0	24

A	Part No.	L	SW
G1/4	255 00 035	43,0	17
G3/8	255 00 036	44,0	19
G1/2	255 00 037	48,5	27
NPT1/4	255 00 061	43,0	17
NPT3/8	255 00 062	44,0	19
NPT1/2	255 00 063	49,0	27

D	Part No.	L	\varnothing
8 mm 5/16"	255 00 038	51,0	14
10 mm 3/8"	255 00 039	51,0	14
13 mm 1/2"	255 00 040	51,0	16

SC Series DL

DN8

3/8"

NEW!



ISO 4414

EN 983

Japanese Profile



Not suitable for knocking, pulsating and vibrating compressed air tools

EN

Features

- Full flow, negligible loss of pressure
- Simple operation, no force required
- Compact design
- Light weight 75 g

DE

Auf einen Blick

- Voller Durchgang, geringer Druckverlust
- Einfache Bedienung ohne Kraftaufwand
- Kompakte Bauform
- Geringes Gewicht 75 g

FR

En bref

- Passage intégral, faible perte de pression
- Maniement simple et sans efforts
- Construction compacte
- Léger 75 g

NL

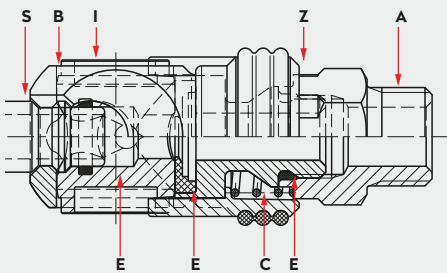
In een oogopslag

- Volledige doorlaat, weinig drukverlies
- Eenvoudige bediening, zonder krachtsinspanning
- Compact ontwerp
- Weegt weinig 75 g

Operating Pressure	Betriebsdruck	Pression de service	Werkdruk
<ul style="list-style-type: none"> • Up to 25 bar, Vacuum till 100 mbar • connection/disconnection to max. 15 bar 	<ul style="list-style-type: none"> • Bis 25 bar, techn. Vakuum bis 100 mbar • ein-/auskuppeln bis max. 15 bar 	<ul style="list-style-type: none"> • Jusqu'à 25 bar, Vide technique jusqu'à 100 mbar • accouplement/désaccouplement jusqu'à 15 bar max 	<ul style="list-style-type: none"> • tot 25 bar, 100 mbar Vacuum • aan- en afkoppelen tot max. 15 bar

	-20° to +100°C (NBR) -4° to +212°F		5001079		295 00 515
--	---------------------------------------	--	---------	--	------------

Materials, Seals



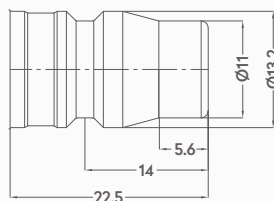
Material Code

- A = Aluminum
- B = Aluminum
- C = Stainless steel
- E = Nitrile elastomer (NBR)
- I = Aluminum
- S = Surface hardened steel, galvanized
- Z = Zinc diecast, nickel plated, orange rubber coating

Options



Plug Profile DL



S = Surface hardened steel, galvanized

Compatible with

TST	013
Nitto	20, 30, 40
Cejn	315
Rectus	13