

NEW!



ISO 4414 EN 983

British Profile



EN

Features

- Full flow, negligible loss of pressure
- Simple operation, no force required
- Compact design

DE

Auf einen Blick

- Voller Durchgang, geringer Druckverlust
- Einfache Bedienung ohne Kraftaufwand
- Kompakte Bauform

FR

En bref

- Passage intégral, faible perte de pression
- Maniement simple et sans efforts
- Construction compacte

NL

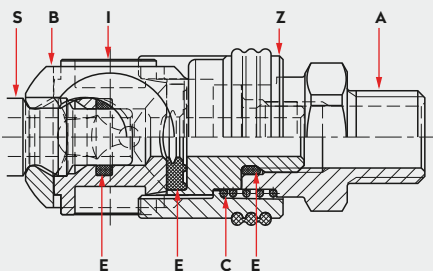
In een oogopslag

- Volledige doorlaat, weinig drukverlies
- Eenvoudige bediening zonder krachtsinspanning
- Compact ontwerp

| Operating Pressure | Betriebsdruck | Pression de service | Werkdruk |
|---|---|--|---|
| <ul style="list-style-type: none"> • Up to 25 bar, Vacuum till 100 mbar • connection/disconnection to max. 15 bar | <ul style="list-style-type: none"> • Bis 25 bar, techn. Vakuum bis 100 mbar • ein-/auskuppeln bis max. 15 bar | <ul style="list-style-type: none"> • Jusqu'à 25 bar, Vide technique jusqu'à 100 mbar • accouplement/désaccouplement jusqu'à 15 bar max | <ul style="list-style-type: none"> • tot 25 bar, 100 mbar Vacuüm • aan- en afkoppelen tot max. 15 bar |

| | | |
|---|-------------------|-------------------|
| <p>-20° to + 100°C (NBR) -4° to + 212°F</p> | <p>295 00 233</p> | <p>295 00 003</p> |
|---|-------------------|-------------------|

Materials, Seals



Material Code

- A = Steel, nickel plated (for thread) aluminum (for hose tail)
- B = Steel, tenifer treated
- C = Stainless steel
- E = Nitrile elastomer (NBR)
- I = Surface hardened steel, nickel plated
- S = Surface hardened steel, galvanized
- Z = Zinc diecast, nickel plated, orange rubber coating

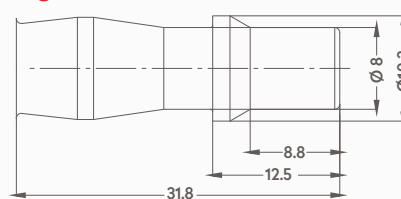
Optional

| | |
|--|------------|
| | 295 00 385 |
| | 295 00 480 |

Options



Plug Profile P



S = Surface hardened steel, galvanized

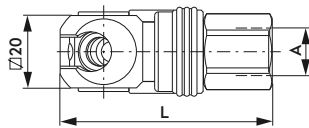
Compatible with

TST 019
PCL AC21, AC29, AC91

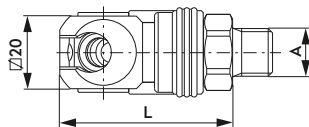


SWING COUPLING SCHWENKKUPPLUNG

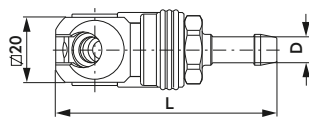
with female thread



with male thread



with hose tail



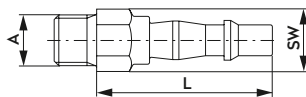
| A | Part No. | L | L (swivel) |
|------|------------|------|------------|
| G1/4 | 205 00 438 | 56.1 | 65.6 |
| G3/8 | 205 00 439 | 57.6 | 67.1 |
| G1/2 | 205 00 440 | 61.1 | 70.6 |

| A | Part No. | L | L (swivel) |
|------|------------|------|------------|
| G1/4 | 205 00 434 | 47.6 | 56.6 |
| G3/8 | 205 00 441 | 47.6 | 56.6 |
| G1/2 | 205 00 442 | 48.6 | 57.6 |

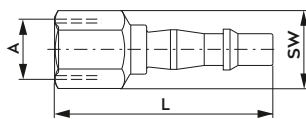
| A | Part No. | L | L (swivel) |
|------------|------------|------|------------|
| 6 mm 1/4" | 205 00 443 | 68.1 | 77.1 |
| 8 mm 5/16" | 205 00 444 | 68.1 | 77.1 |
| 10 mm 3/8" | 205 00 445 | 68.1 | 77.1 |

PLUG STECKNIPPEL

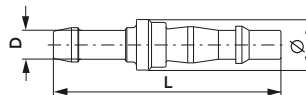
with male thread



with female thread



with hose tail



| A | Part No. | L | SW |
|------|------------|------|----|
| G1/4 | 255 00 320 | 43.0 | 14 |
| G3/8 | 255 00 321 | 45.5 | 17 |

| A | Part No. | L | SW |
|------|------------|------|----|
| G1/4 | 255 00 318 | 55.0 | 17 |
| G3/8 | 255 00 319 | 57.5 | 19 |

| D | Part No. | L | Ø |
|------------|------------|------|----|
| 6 mm 1/4" | 255 00 322 | 63.0 | 14 |
| 8 mm 5/16" | 255 00 323 | 63.0 | 14 |
| 10 mm 3/8" | 255 00 324 | 63.0 | 14 |