

**NEW!**



ISO 4414 EN 983

European Profile



EN

### Features

- Full flow, negligible loss of pressure
- Simple operation, no force required
- Compact design

DE

### Auf einen Blick

- Voller Durchgang, geringer Druckverlust
- Einfache Bedienung ohne Kraftaufwand
- Kompakte Bauform

FR

### En bref

- Passage intégral, faible perte de pression
- Maniement simple et sans efforts
- Construction compacte

NL

### In een oogopslag

- Volledige doorlaat, weinig drukverlies
- Eenvoudige bediening zonder krachtsinspanning
- Compact ontwerp

Operating Pressure	Betriebsdruck	Pression de service	Werkdruk
<ul style="list-style-type: none"> <li>• Up to 25 bar, Vacuum till 100 mbar</li> <li>• connection/disconnection to max. 15 bar</li> </ul>	<ul style="list-style-type: none"> <li>• Bis 25 bar, techn. Vakuum bis 100 mbar</li> <li>• ein-/auskuppeln bis max. 15 bar</li> </ul>	<ul style="list-style-type: none"> <li>• Jusqu'à 25 bar, Vide technique jusqu'à 100 mbar</li> <li>• accouplement/désaccouplement jusqu'à 15 bar max</li> </ul>	<ul style="list-style-type: none"> <li>• tot 25 bar, 100 mbar Vacuum</li> <li>• aan- en afkoppelen tot max. 15 bar</li> </ul>



-20° to + 100°C (NBR)  
-4° to + 212°F

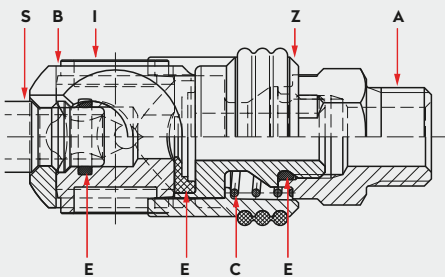


5003487



295 00 515

### Materials, Seals



### Material Code

- A = Steel, nickel plated (for thread) aluminum (for hose tail)
- B = Steel, tenifer treated
- C = Stainless steel
- E = Nitrile elastomer (NBR)
- I = Surface hardened steel, nickel plated
- S = Surface hardened steel, galvanized
- Z = Zinc diecast, nickel plated, orange rubber coating

### Optional



295 00 340

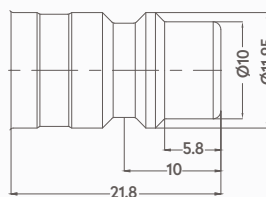


295 00 481

### Options



### Plug Profile C



S = Surface hardened steel, galvanized

### Compatible with

TST	025, 026
Cejn	320
Rectus	25, 26



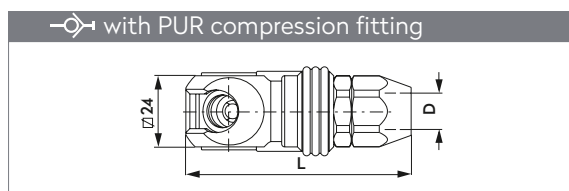
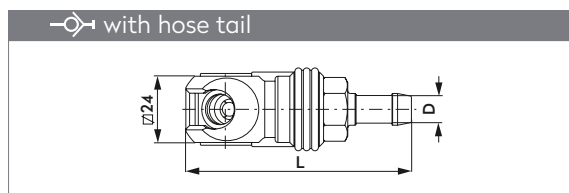
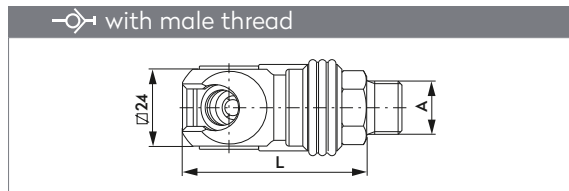
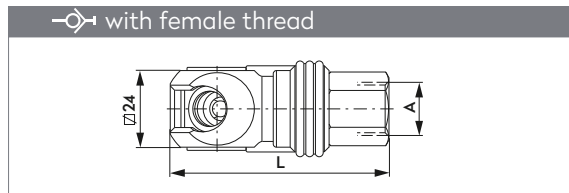
**tst**<sup>®</sup>

**SC Series C**

**DN8**  
3/8"



**SWING COUPLING SCHWENKKUPPLUNG**



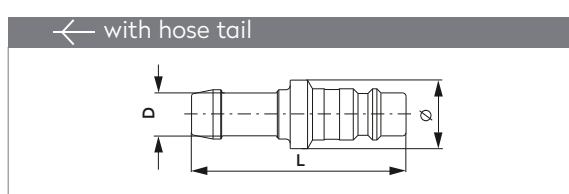
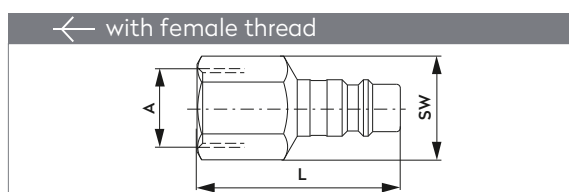
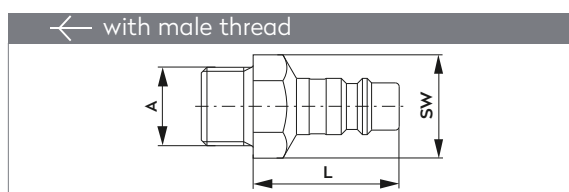
A	Part No.	L	L (swivel)
G1/4	205 00 345	68.5	74.5
G3/8	205 00 346	68.5	74.5
G1/2	205 00 347	69.5	75.5
NPT1/4	205 00 348	68.5	74.5
NPT3/8	205 00 349	68.5	74.5
NPT1/2	205 00 350	73.5	79.5

A	Part No.	L	L (swivel)
G1/4	205 00 351	57.5	63.5
G3/8	205 00 352	57.5	63.5
G1/2	205 00 353	58.5	64.5
NPT1/4	205 00 375	56.2	62.2
NPT3/8	205 00 374	56.2	62.2
NPT1/2	205 00 355	58.5	64.5

D	Part No.	L	L (swivel)
8 mm 5/16"	205 00 356	81.5	87.5
10 mm 3/8"	205 00 357	81.5	87.5
13 mm 1/2"	205 00 358	81.5	87.5

D	Part No.	L
8 X 12	205 00 360	75.8
11 X 16	205 00 361	80.8

**PLUG STECKNIPPEL**



A	Part No.	L	SW
G1/4	255 00 023	31.0	14
G3/8	255 00 024	31.0	19
NPT1/4	255 00 275	28.7	14
NPT3/8	255 00 177	28.7	19

A	Part No.	L	SW
G1/4	255 00 026	42.0	17
G3/8	255 00 027	43.0	19
NPT1/4	255 00 276	42.0	17
NPT3/8	255 00 178	43.0	19

D	Part No.	L	Ø
8 mm 5/16"	255 00 029	50.0	14
10 mm 3/8"	255 00 030	50.0	14
13 mm 1/2"	255 00 031	50.0	16