

**NEW!**



ISO 4414

EN 983



EN

### Features

- Full flow, negligible loss of pressure
- Simple operation, no force required
- Compact design

DE

### Auf einen Blick

- Voller Durchgang, geringer Druckverlust
- Einfache Bedienung ohne Kraftaufwand
- Kompakte Bauform

FR

### En bref

- Passage intégral, faible perte de pression
- Maniement simple et sans efforts
- Construction compacte

NL

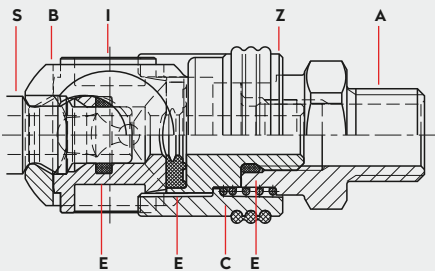
### In een oogopslag

- Volledige doorlaat, weinig drukverlies
- Eenvoudige bediening zonder krachtsinspanning
- Compact ontwerp

Operating Pressure	Betriebsdruck	Pression de service	Werkdruk
<ul style="list-style-type: none"> <li>• Up to 25 bar, Vacuum till 100 mbar</li> <li>• connection/disconnection to max. 15 bar</li> </ul>	<ul style="list-style-type: none"> <li>• Bis 25 bar, techn. Vakuum bis 100 mbar</li> <li>• ein-/auskuppeln bis max. 15 bar</li> </ul>	<ul style="list-style-type: none"> <li>• Jusqu'à 25 bar, Vide technique jusqu'à 100 mbar</li> <li>• accouplement/désaccouplement jusqu'à 15 bar max</li> </ul>	<ul style="list-style-type: none"> <li>• tot 25 bar, 100 mbar Vacuum</li> <li>• aan- en afkoppelen tot max. 15 bar</li> </ul>

<p>-20° to + 100°C (NBR) -4° to + 212°F</p>	<p>295 00 233</p>	<p>295 00 003</p>
---	-------------------	-------------------

### Materials, Seals



### Material Code

- A = Steel, nickel plated (for thread) aluminum (for hose tail)
- B = Steel, tenifer treated
- C = Stainless steel
- E = Nitrile elastomer (NBR)
- I = Surface hardened steel, nickel plated
- S = Surface hardened steel, galvanized
- Z = Zinc diecast, nickel plated, orange rubber coating

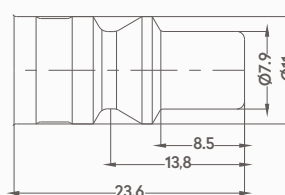
### Optional

	295 00 385
	295 00 480

### Options



### Plug Profile A1



S = Surface hardened steel, galvanized

### Compatible with

TST	014, 022
AMFLO	C38
ARO	210
Cejn	300
Foster	210
Parker	B53
Rectus	14,22



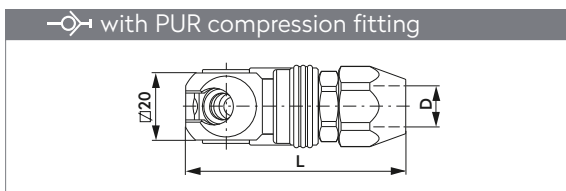
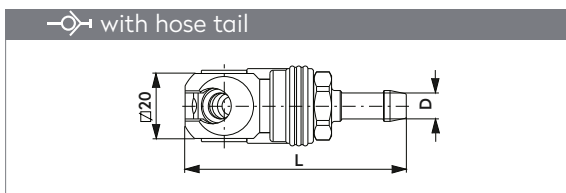
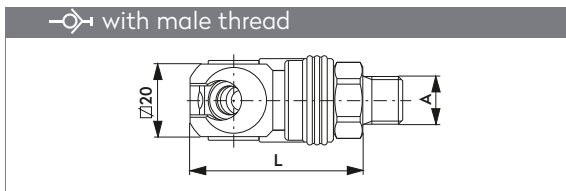
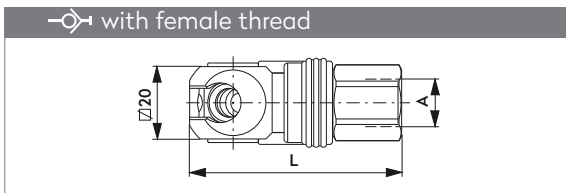
**tst**<sup>®</sup>

**SC Series A1**

**DN6**  
1/4"



**SWING COUPLING SCHWENKKUPPLUNG**



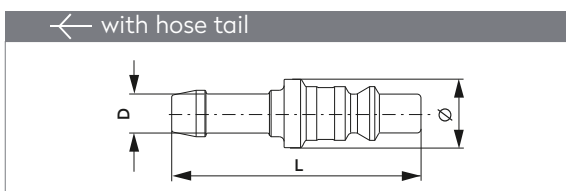
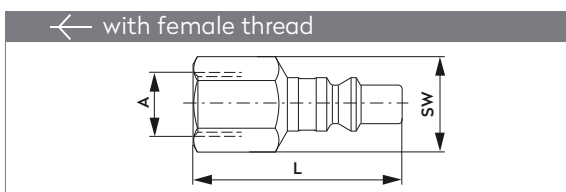
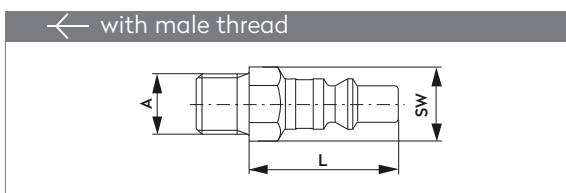
A	Part No.	L	L (swivel)
G1/4	205 00 287	56.1	65.6
G3/8	205 00 288	57.6	67.1
G1/2	205 00 289	61.1	70.6
NPT1/4	205 00 291	56.1	65.6
NPT3/8	205 00 292	58.6	68.1
NPT1/2	205 00 293	64.6	74.1

A	Part No.	L	L (swivel)
G1/4	205 00 294	47.6	56.6
G3/8	205 00 295	47.6	56.6
G1/2	205 00 296	48.6	57.6
NPT1/4	205 00 297	48.8	57.8
NPT3/8	205 00 298	48.8	57.8
NPT1/2	205 00 299	48.6	57.6

D	Part No.	L	L (swivel)
6 mm 1/4"	205 00 300	68.1	77.1
8 mm 5/16"	205 00 301	68.1	77.1
10 mm 3/8"	205 00 302	68.1	77.1

D	Part No.	L
6.5 X 10	205 00 304	62.6
8 X 12	205 00 305	65.6

**PLUG STECKNIPPEL**



A	Part No.	L	SW
G1/8	255 00 000	34.0	14
G1/4	255 00 001	31.0	14
NPT1/4	255 00 003	30.7	14
NPT3/8	255 00 066	32.7	19

A	Part No.	L	SW
G1/4	255 00 005	43.0	17
NPT1/4	255 00 007	43.0	17
NPT1/8	255 00 068	45.0	19

D	Part No.	L	Ø
6 mm 1/4"	255 00 008	51.0	14
8 mm 5/16"	255 00 009	51.0	14
10 mm 3/8"	255 00 010	51.0	14