

NEW!



ISO 4414 EN 983
ISO 6150-C-14
AFNOR: C-14 NF E 49-053



EN

Features

- Full flow, negligible loss of pressure
- Simple operation, no force required
- Compact design

DE

Auf einen Blick

- Voller Durchgang, geringer Druckverlust
- Einfache Bedienung ohne Kraftaufwand
- Kompakte Bauform

FR

En bref

- Passage intégral, faible perte de pression
- Maniement simple et sans efforts
- Construction compacte

NL

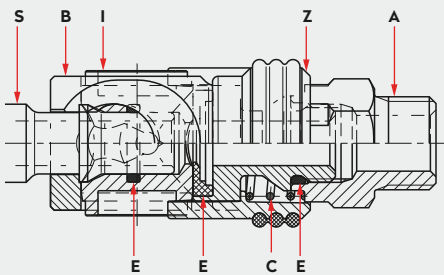
In een oogopslag

- Volledige doorlaat, weinig drukverlies
- Eenvoudige bediening zonder krachtsinspanning
- Compact ontwerp

Operating Pressure	Betriebsdruck	Pression de service	Werkdruk
<ul style="list-style-type: none"> • Up to 25 bar, Vacuum till 100 mbar • connection/disconnection to max. 15 bar 	<ul style="list-style-type: none"> • Bis 25 bar, techn. Vakuum bis 100 mbar • ein-/auskuppeln bis max. 15 bar 	<ul style="list-style-type: none"> • Jusqu'à 25 bar, Vide technique jusqu'à 100 mbar • accouplement/désaccouplement jusqu'à 15 bar max 	<ul style="list-style-type: none"> • tot 25 bar, 100 mbar Vacuum • aan- en afkoppelen tot max. 15 bar

<p>-20° to + 100°C (NBR) -4° to + 212°F</p>	<p>5001079</p>	<p>295 00 515</p>
---	----------------	-------------------

Materials, Seals



Material Code

- A = Steel, nickel plated (for thread) aluminum (for hose tail)
- B = Steel, tenifer treated
- C = Stainless steel
- E = Nitrile elastomer (NBR)
- I = Surface hardened steel, nickel plated
- S = Steel, tenifer treated
- Z = Zinc diecast, nickel plated, orange rubber coating

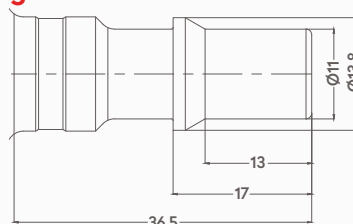
Optional

	295 00 340
	295 00 481

Options



Plug Profile E1



S = Steel, tenifer treated

Compatible with

TST 107.08
TST SV - DN 8



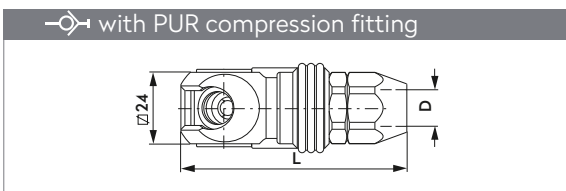
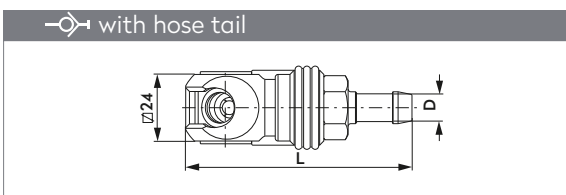
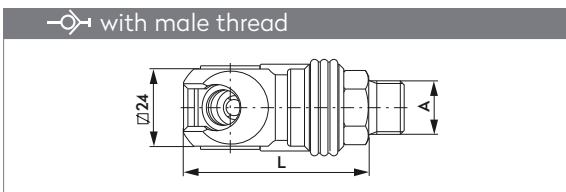
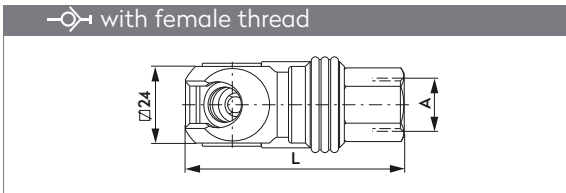
tst®

SC Series E1

DN8
3/8"



SWING COUPLING SCHWENKKUPPLUNG



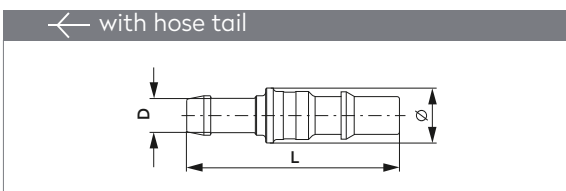
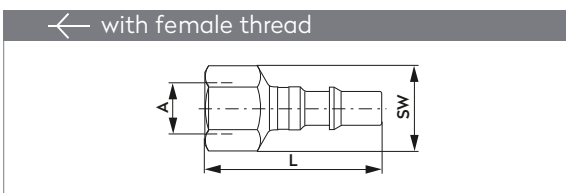
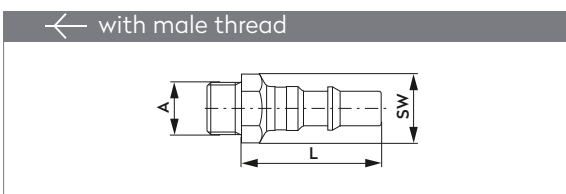
A	Part No.	L	L (swivel)
G1/4	205 00 115	69.5	74.5
G3/8	205 00 116	69.5	74.5
G1/2	205 00 117	70.5	75.5
NPT1/4	205 00 118	69.5	74.5
NPT3/8	205 00 119	69.5	74.5
NPT1/2	205 00 120	74.5	79.5

A	Part No.	L	L (swivel)
G1/4	205 00 121	58.5	63.5
G3/8	205 00 122	58.5	63.5
G1/2	205 00 123	59.5	64.5
NPT1/4	205 00 383	57.2	62.2
NPT3/8	205 00 124	57.2	62.2
NPT1/2	205 00 125	59.5	64.5

A	Part No.	L	L (swivel)
8 mm 5/16"	205 00 126	82.5	87.5
10 mm 3/8"	205 00 127	82.5	87.5
13 mm 1/2"	205 00 128	82.5	87.5

A	Part No.	L
8 X 12	205 00 130	76.8
11 X 16	205 00 131	81.8

PLUG STECKNIPPEL



A	Part No.	L	SW
G1/4	255 00 101	44.5	17
G3/8	255 00 102	44.5	19
NPT1/4	255 00 090	44.7	17
NPT3/8	255 00 089	44.7	19

A	Part No.	L	SW
G1/4	255 00 103	55.5	17
G3/8	255 00 105	57.5	24
NPT1/4	255 00 104	56.5	17
NPT3/8	255 00 106	57.5	24

D	Part No.	L	Ø
8 mm 5/16"	255 00 107	62.0	14
10 mm 3/8"	255 00 108	62.0	14
13 mm 1/2"	255 00 109	62.0	16
16 mm 5/8"	255 00 110	62.0	22