

SC Series DL

DN8

3/8"

NEW!



ISO 4414 EN 983

Japanese Profile



Not suitable for knocking, pulsating and vibrating compressed air tools

EN

Features

- Full flow, negligible loss of pressure
- Simple operation, no force required
- Compact design
- Light weight 75 g

DE

Auf einen Blick

- Voller Durchgang, geringer Druckverlust
- Einfache Bedienung ohne Kraftaufwand
- Kompakte Bauform
- Geringes Gewicht 75 g

FR

En bref

- Passage intégral, faible perte de pression
- Maniement simple et sans efforts
- Construction compacte
- Léger 75 g

NL

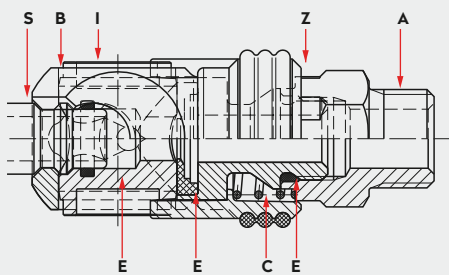
In een oogopslag

- Volledige doorlaat, weinig drukverlies
- Eenvoudige bediening, zonder krachtsinspanning
- Compact ontwerp
- Weegt weinig 75 g

Operating Pressure	Betriebsdruck	Pression de service	Werkdruk
<ul style="list-style-type: none"> • Up to 25 bar, Vacuum till 100 mbar • connection/disconnection to max. 15 bar 	<ul style="list-style-type: none"> • Bis 25 bar, techn. Vakuum bis 100 mbar • ein-/auskuppeln bis max. 15 bar 	<ul style="list-style-type: none"> • Jusqu'à 25 bar, Vide technique jusqu'à 100 mbar • accouplement/désaccouplement jusqu'à 15 bar max 	<ul style="list-style-type: none"> • tot 25 bar, 100 mbar Vacuum • aan- en afkoppelen tot max. 15 bar

<p>-20° to +100°C (NBR) -4° to +212°F</p>	<p>5001079</p>	<p>295 00 515</p>
---	----------------	-------------------

Materials, Seals



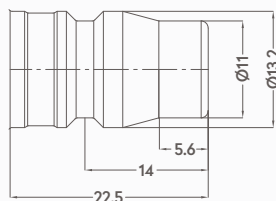
Material Code

- A = Aluminum
- B = Aluminum
- C = Stainless steel
- E = Nitrile elastomer (NBR)
- I = Aluminum
- S = Surface hardened steel, galvanized
- Z = Zinc diecast, nickel plated, orange rubber coating

Options



Plug Profile DL



S = Surface hardened steel, galvanized

Compatible with

TST	013
Nitto	20, 30, 40
Cejn	315
Rectus	13



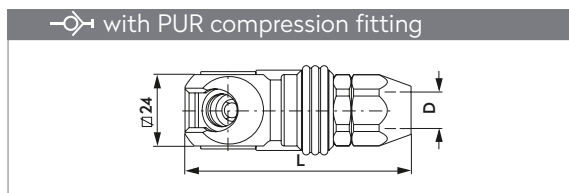
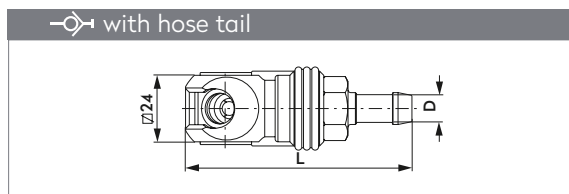
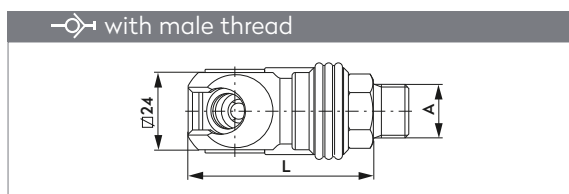
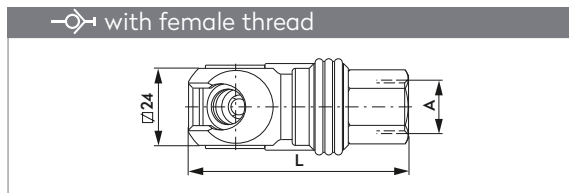
tst®

SC Series DL

DN8
3/8"



SWING COUPLING SCHWENKKUPPLUNG



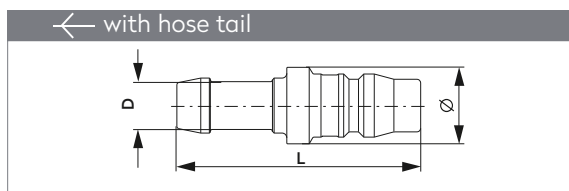
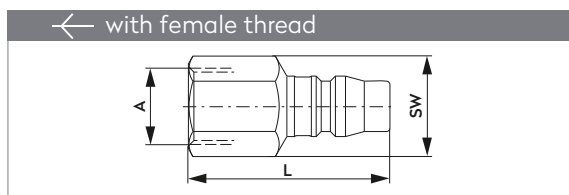
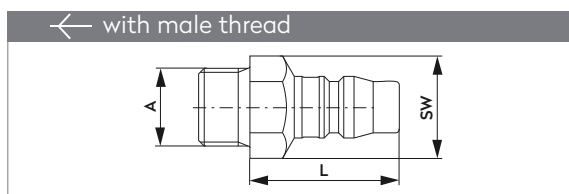
A	Part No.	L	L (swivel)
G1/4	205 00 060	68.0	74.5
G3/8	205 00 061	68.0	74.5
G1/2	205 00 062	69.0	75.5
NPT1/4	205 00 072	68.0	74.5
NPT3/8	205 00 073	68.0	74.5
NPT1/2	205 00 074	73.0	79.5

A	Part No.	L	L (swivel)
G1/4	205 00 063	57.0	63.5
G3/8	205 00 064	57.0	63.5
G1/2	205 00 065	58.0	64.5
NPT1/4	205 00 427	55.7	62.2
NPT3/8	205 00 075	55.7	62.2
NPT1/2	205 00 076	58.0	64.5

D	Part No.	L	L (swivel)
8 mm 5/16"	205 00 077	81.0	87.5
10 mm 3/8"	205 00 078	81.0	87.5
13 mm 1/2"	205 00 079	81.0	87.5

D	Part No.	L
8 X 12	205 00 081	75.3
11 X 16	205 00 082	80.3

PLUG STECKNIPPEL



A	Part No.	L	SW
G1/4	255 00 032	32.0	14
G3/8	255 00 033	32.0	19
G1/2	255 00 034	32.0	24
NPT1/4	255 00 058	28.7	14
NPT3/8	255 00 059	28.7	19
NPT1/2	255 00 060	33.0	24

A	Part No.	L	SW
G1/4	255 00 035	43.0	17
G3/8	255 00 036	44.0	19
G1/2	255 00 037	48.5	27
NPT1/4	255 00 061	43.0	17
NPT3/8	255 00 062	44.0	19
NPT1/2	255 00 063	49.0	27

D	Part No.	L	\varnothing
8 mm 5/16"	255 00 038	51.0	14
10 mm 3/8"	255 00 039	51.0	14
13 mm 1/2"	255 00 040	51.0	16